

Matt Dealaman solders pipe during the plumbing portion of the Skills USA competition. Last week, dozens of Somerset County Vocational High School students took part in the series of challenges. **PAGE A3**



B-R BOYS, IMMACULATA GIRLS IN HOOPS HEAVEN

The Bridgewater-Raritan High boys basketball team won its fourth straight Somerset County Tournament championship by a 58-45 difference over Immaculata while the Immaculata girls toppled Montgomery 44-34 for their first title in four years. **PAGE B1**



The Big Apple Circus is back in town and on Tuesday workers spent the day pitching the giant tent. See more photos inside, and online at blog.nj.com/reporter/ **PAGE A5**

The Chronicle

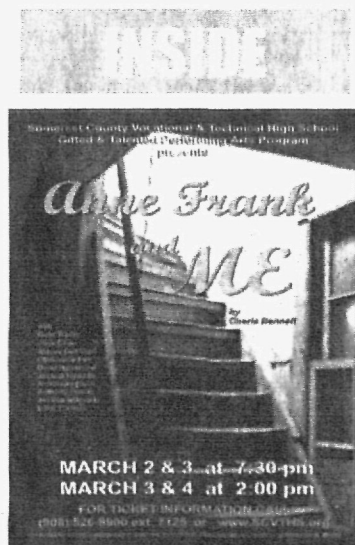
Since 1862

MAR 03 2007

Vol. 146, No. 9

Saturday, March 3, 2007

50 cents



Past lessons still ring true

"Anne Frank & Me," a play that helps today's teens understand the horrors of the Holocaust, will be performed by students from the Somerset County Vocational and Technical High School's Gifted and Talented Performing Arts Department this weekend. **Page A6**

Summer fun at area 4-H

Middlesex County 4-H will be hosting the 2007 Explorations Week Summer Program from Monday, July 9 to Friday, July 13 at the Middlesex County 4-H Center (located at 645 Cranbury Road) in East Brunswick. The program focuses on acceptance and belonging among attendees as well as having fun and promoting self-confidence. Children from grades 3 through 6 are especially encouraged to take part, as there are many spaces open for this age group. Arrangements can be made for kids with special needs. Attendees of the program will have a chance to choose from daily activities such as Rocketry, Dance, Biking, Wilderness Survival, Drama, and Sports. The theme of E-Week 2007 will be "Arctic Expedition". The cost of the program is \$150 for 4-H members, \$155 for non-members and includes program materials, lunch and beverages, an E-Week T-shirt, roller skating field trip and an optional Friday night overnight stay. Those interested in more information on E-Week or to register can contact the Middlesex County 4-H office at (732) 398-5261. 4-H will also accommodate efforts to carpool, and the need for early drop off or late pick-up.

INDEX

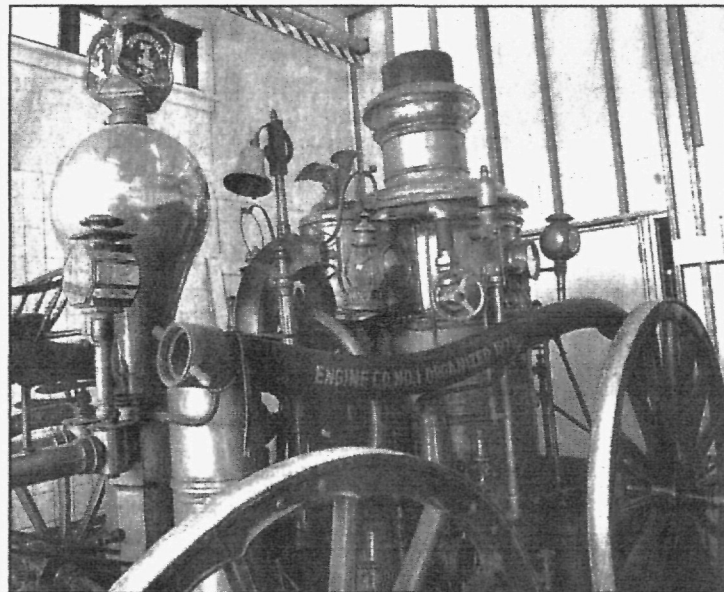
- Commentary.....A4
- Community Life.....A5
- Sports.....B1
- Weekend Plus.....A3

Fire flickers 50 years later

At top is the carnage caused by a fire on West Main Street in Somerville 50 years ago. Above, an 1879 steamer fire apparatus, currently inside the West End Hose Company Number 3 building on West High Street, will be part of the Somerville Fireman's Museum on Mercer Street. For the full story on the museum, see page A2.



GEORGE PACCIOLLO/STAFF PHOTOGRAPHER, above; COURTESY SOMERVILLE FIRE DEPARTMENT, top



Borough's worst blaze remembered

By ALLISON ELYSE GUALTIERI
Staff Writer

SOMERVILLE — The headline on the front page of the Thursday, Feb. 21, 1957 edition of the Somerville Messenger-Gazette reads, "Flames Destroy Four Stores in Spectacular \$400,000 Fire."

Fifty years ago, one of the biggest fires in the history of Somerville raged on Main Street, destroying four stores between 80 and 84 West Main Street, and taking days to completely extinguish. The building, built in 1919, was a charred ruin.

Fire Sunday night swept through four stores in this borough's mid-town business section, raging out of control for more than five hours.

Continued on page A2

NJDEP provides grants to 7 towns

All seven municipalities in the 18th District are receiving Clean Communities grants from the New Jersey Department of Environmental Protection.

Clean Communities funds can be used to purchase or rent equipment and receptacles. The money can also be used to provide trash bags, gloves and other protective clothing to encourage municipalities and volunteers to clean up solid waste in their localities.

Edison will receive \$94,195.74; East Brunswick, \$50,413.80; South Plainfield, \$24,194.86; South River, \$15,246.48; Metuchen, \$14,112.16; Spotswood, \$8,765.31; and Helmetta, \$4,000.

The grants were issued by the DEP last month and announced in a Feb. 21 release from Sen. Barbara Buono, D-18th Dist.

"Managing solid waste helps advance the state's commitment to create more livable communities and protect the health of our residents," she said. "By keeping our communities clean we can reduce the amount of contamination entering our drinking-water and natural resources."

"Cleaning up our communities will strengthen residents' pride in their neighborhoods," said Assemblyman Peter J.

Continued on page A2

Grower chosen as farm family of '07

Congratulations have been given to Robert von Thun Jr. and family for being selected as New Jersey's 2007 Farm Family of the Year by the Vegetable Growers Association of New Jersey.

The von Thun family began farming in Monmouth Junction in 1913 on 90 acres, selling grain and potatoes through wholesale markets. Von Thun added 55 acres of soybeans and 35 acres of vegetables to the farm's production in 1986. Today the von Thun family continues to grow a variety of fruits and vegetables for their farm stand and local markets, but they are also leaders in the agricultural tourism industry.

"The von Thun family is truly deserving of this award," according to Bill Hlubik, an agricultural agent with Rutgers Cooperative Extension of Middlesex County. "The von Thuns have one of the most creative and unique family farm businesses in the state," he said. "They have provided agricultural

education to many thousands of children through school tours and have hosted tours for international groups as well."

Von Thun has held agricultural education sessions every year since 1990. As many as 10,000 children from preschool through Grade 2 have visited the farm. The children learn about agriculture, the food system and natural resource management during their visits.

Von Thun's emphasis on marketing has led him to double the size of his retail market. The farm's website (www.vonthunfarms.com) tells customers the history of the farm and provides schedules for tailgate markets, festivals and seasonal activities. Through education and public outreach the von Thuns have helped garner public interest and support for the agriculture industry.

Conservation of natural resources and sustainable

Continued on page A2



COURTESY THE CHALLENGE

The academic team from Dunellen High School competes against University High School of the Humanities in round one of The Challenge, airing this weekend on Cablevision's News 12 New Jersey. Pictured on the set during a break in taping at Rutgers University are team members, from left, Antonio Matheus (advisor), Jayne Ricciardi (advisor), Larry Miller, Matt Turlip, Bryan Jenkins (host), T.J. Wenzel (captain), Keith Stebor and Amanda Rentenberg (alternate).

Ready for The Challenge

Dunellen High School will kick off the second year of The Challenge by taking on University High School of the Humanities in round one of the academic quiz show designed to test students' knowledge in a Jeopardy-style format.

This first round match up

between Dunellen and University High School of the Humanities will air exclusively on News 12 New Jersey at 6:30 p.m. and 9:30 p.m. tonight with an encore airing at 6:30 p.m. and 9:30 p.m. tomorrow.

"We are teaching students across

Continued on page A2

Got skills? These county Vo-Tech teens do

By Allison Elyse Gualtieri
Staff Writer

BRIDGEWATER — Chris Stitley was halfway through the time limit set for his task, and was confident he would finish in time.

The Somerset County Vocational High School junior was in the midst of wiring together two lights, three switches, and two outlets on the frame of a small room in the mock-up of a construction site in the middle of Ben Pokrywa's classroom.

"I had to wire up all the boxes and make sure all the lights work," he said. "It's pretty simple for me."

Stitley, along with his classmates in Electrical Construction, participated in the state- and nationwide Skills USA competition last Wednesday, which judges vocational students on the accuracy, safety, and adherence to national construction code standards on a timed task.

Of all the students competing in two rounds in

Pokrywa's shop, one will go to compete on the state level, and from there, hopefully on the national level.

Even if they don't win the Skills USA competition, all of his seniors will be going on to bigger challenges: those of the working world, where they have already been offered jobs after they graduate.

"All my seniors do CIE (Cooperative Industrial Education), where they get on-the-job training with a licensed electrician," Pokrywa said. "All 13 seniors, every one is placed. I usually get 100 percent on that."

The Skills USA competition, held every year, is an important part of their education, said Bob Hahn, a teacher at the school and a member of the national advisory board for Skills USA in his field, plumbing.

As his students ran the copper pipes necessary to outfit a residential bathroom — under the watchful eyes of local professionals

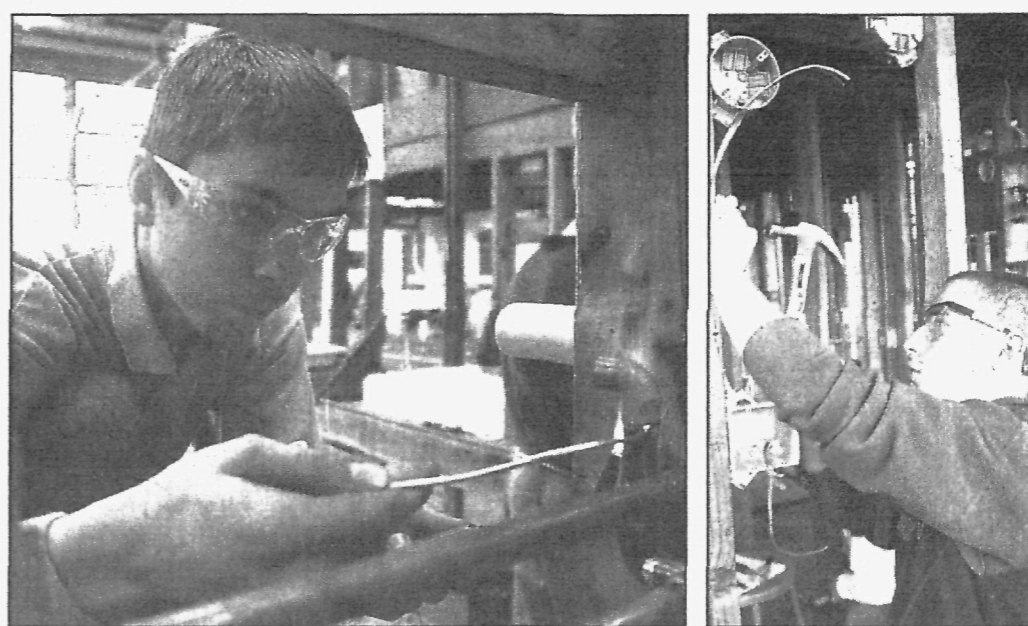
judging the school's competition — Hahn said that the competition primes them for their futures.

"This is a live, actual competition. If you took the wall down in your bathroom, this is what you'd see," he said. "The whole ideal of Skills USA is to show the skill that they've chosen, what they've spent the last two to four years mastering."

The school has sent students to the state competition for the last 19 years, and each year at least one gets the gold medal to go on to the national event, held at Bartell Hall in Kansas City, Mo.

It's an exciting time for the teachers, students, and administrators, said principal Edmund Jones.

"We actually had parents come in to watch their children compete," he said. "The competitions take them into a different level of achievement. They share their interests and competitive skills with students from all over the state."



PHOTOS BY GEORGE PACCIOLLO/STAFF PHOTOGRAPHER

Chris Stitley, above right, a student at Somerset County Vocational High School, wires lighting during last week's Skills USA competition, which judges vocational students on the accuracy, safety, and adherence to national construction code standards on a timed task. At left, Matt Dealaman solders pipe during the plumbing part of the competition.

Whether the students choose to go on to college, enter the workforce, or go into business for themselves, the Skills USA program lets them show off their skills and meet other students working in the same field.

"All the things we have are for job readiness and preparation," he said.

In The Towns

Dunellen library offering programs

DUNELLEN — The Dunellen Public Library has these programs for the public: "Baby Buddies," 10:30 a.m. Wednesdays. This play group is for children under age 3, accompanied by an adult. No registration is necessary. "Imagination Station," 10:30 a.m. Thursdays. This story-time program is for children ages 3-5. Registration is required.

For registration where it is required, call (732) 968-4585 or visit the library on New Market Road.

Metuchen YMCA begins new session

METUCHEN — The winter-spring session of the Metuchen Branch YMCA has begun.

Among the programs in the winter-spring session: Adult Scrabble Club, 2 p.m. every Saturday. "Knitting at the Y," 7:30 p.m. Monday beginning March 5. St. Patrick's Day show at Doolan's, Friday, March 16. For registration and fees, visit www.metuchen-edisonymca.org or call (732) 548-2044.

Blood drive honors memory of local man

METUCHEN — Congregation Neve Shalom, 250 Grove Ave., holds a blood drive in memory of Michael Allan Thompson from 9 a.m. to 2 p.m. Sunday, March 4. All who sign up for the blood drive receive 10 free game tickets to the Purim carnival on the synagogue grounds that day. To schedule an appointment, e-mail neveshalomblooddrive@yahoo.com

m or call Bruce Levin at (732) 906-1922.

Board of Health has scheduled meetings

HIGHLAND PARK — The Highland Park Board of Health meets at 7 p.m. selected Thursdays in the lower level conference room at Borough Hall, 221 S. Fifth Ave.

Meetings are scheduled for March 8, April 12, May 10, June 14, July 12, Aug. 9, Sept. 6, Oct. 11, Nov. 8 and Dec. 13. For additional information, contact Karen Valente at (732) 777-6013.

Planning Board releases schedule

BOUND BROOK — The Bound Brook Planning Board meets at 7:30 p.m. on design-

nated Thursdays in Borough Council chambers at the Municipal Building, 230 Hamilton St.

Meetings are scheduled for March 8 and 22; April 12 and 26; June 14 and 28; July 12 and 26; Aug. 9 and 23; Sept. 13 and 27; Oct. 11 and 25; Nov. 8; and Dec. 13. The reorganization meeting is scheduled for Jan. 10, 2008.

Dunellen school selling 'used' books

DUNELLEN — Exodus, the Dunellen High School yearbook, is holding a sale of gently used books in mid-March. Bring your donations any time to the DHS campus at 411 First St. You can also have your donations picked up by calling (732) 968-0885, Ext. 17.

Book sale hours are 4-9 p.m. Friday, March 16 and 8 a.m.-noon Saturday, March 17.

Edison Arts Society honors a member

EDISON — Dorothy Obropta has been honored by the Edison Arts Society as its Artist of the Season for winter 2007. Obropta is a published author, a retired teacher in the Metuchen school system and a consultant to the Rutgers Graduate School of Education. She was a volunteer with the "Art in the Garden" tour the Arts Society held in August. She has lived in Metuchen for 35 years and attends all concerts of the Edison Symphony Orchestra. Obropta

is a volunteer with JFK Medical Center, the Metuchen Senior Citizens Commission and the Friends of the Metuchen Public Library.

Volunteers needed for adult programs

EDISON — Volunteers are needed to work with older adults in adult day programs

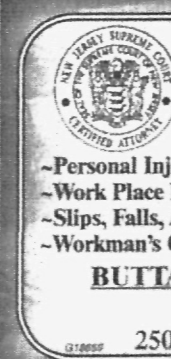
sponsored by the Jewish Family & Vocational Service of Middlesex County. Programs meet three days a week at Temple Emanu-El on James Street. Programs: Arts and crafts, music, cultural activities, lectures, demonstrations, book reviews, dance and poetry. E-mail ejberman@jfv.org or call (732) 777-1940, Ext. 122.



TRUE COMMUNITY BANKING.
COOL.

UNITY BANK

800.618.BANK
unitybank.com



GARY M. PRICE
CERTIFIED BY THE SUPREME COURT OF NEW JERSEY AS A CIVIL TRIAL ATTORNEY

- Personal Injury
- Work Place Injuries
- Slips, Falls, Accidents
- Workman's Comp
- Employment Disputes
- Real Estate
- Closing, Refinances
- Initial Consultation Free

BUTTAFUOCO, ARCE & PRICE, L.L.C.
(908) 668-8829
2509 Park Avenue, South Plainfield

Thank You!
For Voting Us*
"Best Oil Change"

jiffylube

*Readers' Choice

BRIDGEWATER
1316 Route 22 East
908-231-9800

GREEN BROOK
195 Route 22 East
732-424-7300

Pelican's Presidential!

POOL & SPA SALE!
Lowest Prices in New Jersey

6 MONTHS
0 PAYMENTS
0 INTEREST

Home Resort Living Spas • Grills • Gazebos
Available For Immediate Delivery

SPAS POOLS GRILLS PATIO SETS
DISCOUNT COUPONS ON OUR WEBSITE
PelicanPool.com

CalSpa
CHANGING THE WAY YOU FEEL
POWERED BY GE Motors

Pelican Spa, Pool & Patio Shops

5 Miles West of Somerville

WHITEHOUSE ROUTE 22
908-534-2534

MORRIS PLAINS ROUTE 10
973-267-0964

EAST BRUNSWICK ROUTE 18
732-254-5115

All Pelican stores independently owned & operated.

AMERICAN TIRE & AUTO CARE
Approved Auto Repair

WESTFIELD 600 North Avenue
(Near Garwood Shop-Rite)
M-F 7 to 6, Sat. 7 to 5
908-233-0393

GREEN BROOK 287 Route 22
(Next to D&R Booth)
M-F 7 to 8, Sat. 7 to 5
732-752-1480

TIRES Foreign, Domestic & Light Truck
All Major Brands Of Tires
Free Mounting, Lifetime Rotation

SERVICE Brakes • Alignments • Shocks/Struts
• Exhausts • Manifold/headers Recommended
Service (2006/2004/2004)
Oil Changes • NJ State Inspection

SATISFACTION Free Pickup & Dropoff • After Hours Key Drop
Clean, Comfortable Waiting Lounge
All Major Credit Cards Accepted

ALL SEASON MUD AND SNOW RATED
BFGoodrich Traction T/A Tires
65,000 Mile Manufacturer's Limited Treadwear Warranty

TIRE SIZE	PRICE
P185/65R14	\$62.95
P195/70R14	\$60.95
P205/70R15	\$67.95
P215/60R16	\$90.95
P225/60R16	\$82.95
P215/55R16	\$90.95

ALL SEASON RADIAL

P185/65R15	\$49.95
P195/65R15	\$46.95
P205/70R15	\$49.95
P205/65R15	\$46.95
P215/60R16	\$59.95
P225/60R16	\$69.95

ALL SEASON RADIAL FOR LIGHT TRUCKS

P215/75R15	\$55.95
P225/75R15	\$64.95
P235/75R15	\$69.95
LT215/85R16	\$84.95
LT285/75R16	\$129.95

MICHELIN ENERGY MXV4 PLUS

P195/60R15H	\$108.95
P195/65R15H	\$120.95
P205/60R15H	\$114.95
P205/65R15H	\$128.95
P205/55R16H	\$140.95
P205/60R16H	\$141.95

MICHELIN HARMONY

P185/65R14	\$86.95
P195/70R14	\$87.95
P185/65R15	\$97.95
P205/65R15	\$101.95
P205/70R15	\$99.95
P215/70R15	\$100.95

LUBE, OIL & FILTER CHANGE
Only \$19.95
ON MOST CARS.
Brace service, includes new oil & filter, check fluids, lube chassis & a FREE safety inspection. Environmental fee of \$2.00 applies. Work Coupon Expires 3/31/07

BRAKE SPECIAL
2-Wheel Disc Brake Service
\$20 OFF
Install new brakes, shoes or pads on front axle. Inspect calipers, master cylinders, hoses and lines. Add lube, fluid, necessary. Machine and adjust or repair. Free alignment. Same-day pickup \$20 extra. Mid-type rotor extra. SHI OMA

ALIGNMENT SERVICE & FREE TIRE ROTATION
Save \$29.95
For most passenger cars and light trucks.
• Set correct camber and toe angle. • Inspect suspension and steering system. Expires 3/31/07 SHI OMA

RADIATOR SERVICE \$15 OFF
POWER FLUSH
Includes Pressure Test of Cooling System, Inspection of Water Pump, Hoses, Belts & Radiator Cap. SHI OMA

ADMISSIONS OPEN HOUSE
March 11, 2007
1:00 - 3:00 p.m.

Middlesex County Vocational & Technical High Schools
Preparing Today's Students...
...For Tomorrow's Careers

Career Majors:

- Agriscience Technology
- Architectural Drafting/CAD
- Auto Mechanics
- Automated Office Technology
- Automotive Collision Repair Technology
- Baking
- Carpentry
- Commercial Art/Marketing Design
- Computer Applications for Business
- Computer Application for Business/Health Careers
- Computer Assisted Drafting/CAD
- Computer Systems Technology
- Cosmetology/Hairstyling
- Culinary Arts: Commercial Foods
- Electrical Technology
- Graphic Arts
- Health Technology
- Heating, Ventilation, Air Conditioning and Refrigeration
- Machine Tool Technology
- Performing Arts/Dance (Audition Required)
- Performing Arts/Theatre (Audition Required)
- Welding

Visit a campus nearest You!!!

East Brunswick Campus 112 Rues Lane (732) 254-8700	Perth Amboy Campus 457 High Street (732) 376-6300	Piscataway Campus 21 Suttons Lane (732) 985-0717	Woodbridge Campus Convery Boulevard (732) 634-5858
---	--	---	---

FREE TUITION FOR COUNTY RESIDENTS. FREE TRANSPORTATION.
For more information call (732) 257-3300 x1944
www.mcvtc.net

Middlesex Life

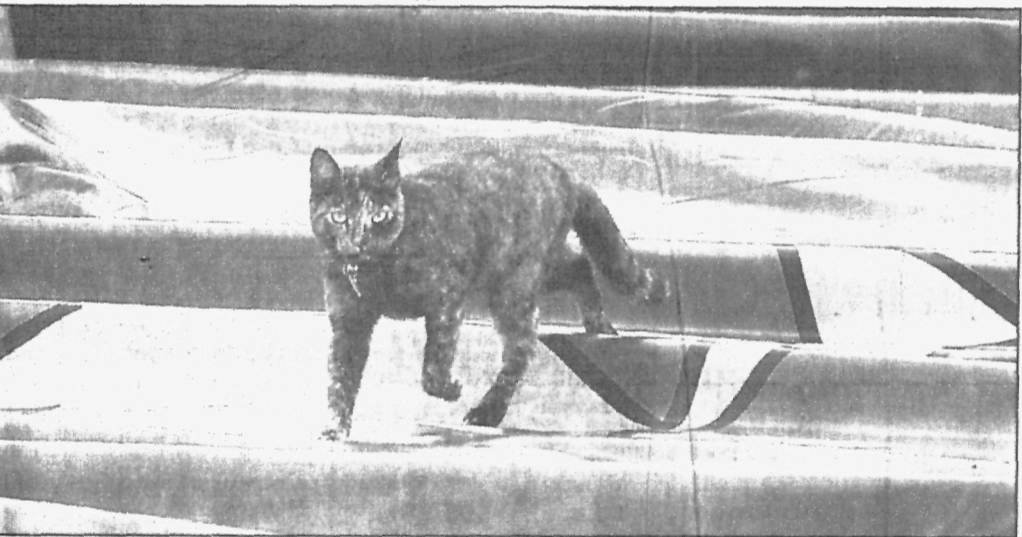
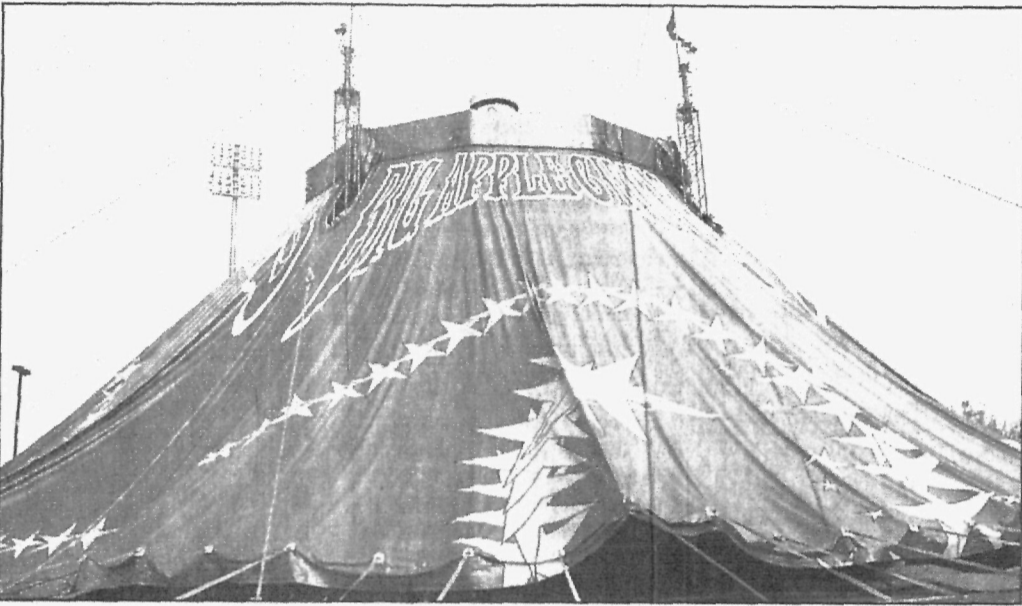
Saturday, March 3, 2007

This Weekend

Saturday, March 3
BRANCHBURG - "Study Skills," first of four-week course for ages 11-14. Raritan Valley Community College, 9:30 a.m. \$69. (908) 526-1200, Ext. 8404 or cce@raritanval.edu.
BRANCHBURG - Open House for students interested in Raritan Valley Community College, 10 a.m.-noon. (908) 253-6688 or recruitment@raritanval.edu.
BRANCHBURG - Eclipse: a lecture on why one occurs. Planetarium, Raritan Valley Community College, 5:30, 6, 6:30 and 7 p.m. \$3. (908) 231-8805.
BRIDGEWATER - Unload It: monthly recycling dropoff for Somerset County residents. Recycling Center, 40 Polhemus Lane, 8 a.m.-2 p.m. (732) 469-3363.
BRIDGEWATER - "Prep Rally," annual event of 4-H Prep Clubs for Grades 1-3. Ted Blum 4-H Center, 310 Milltown Road, 9 a.m. (908) 526-6644 or somersetcounty4h@co.somerset.nj.us.
BRIDGEWATER - Sports Psychology: Mark Weiner on "Developing a Winning Attitude." Sports Performance and Rehabilitation Center, Commerce Bank Ballpark, 9 a.m. Free. Registration required: (908) 203-5972.
BRIDGEWATER - Winter Arts: "Exploring Native American Culture" for ages 6-10. Duke Island Park, Old York Road, 10:30 a.m. March 3, 10. \$8 per week. Registration required: (908) 722-1200, Ext. 226.
BRIDGEWATER - Singles Dinner for Christian professionals ages 25-45. Maggiano's, 600 Commons Way, 6 p.m. \$40. Reservations required by March 2: JerzeyAngelGirl@aol.com or (732) 764-9073.
BRIDGEWATER - Dance Party and lessons for professional and business singles. Days Inn, 1260 Route 22 East; lessons at 6:45 p.m., dance at 8 p.m. \$20 dance and lessons, \$15 dance only. (888) 348-5544 or www.pbsninfo.com.

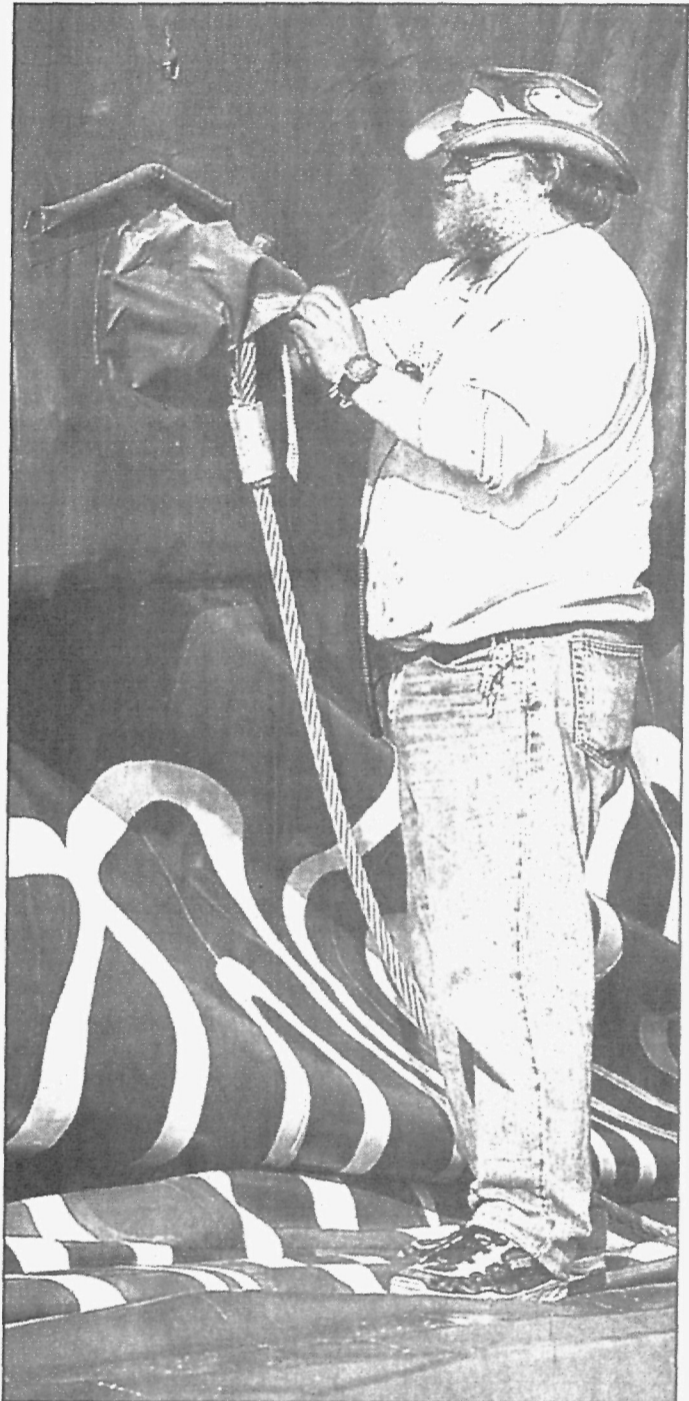


One big top

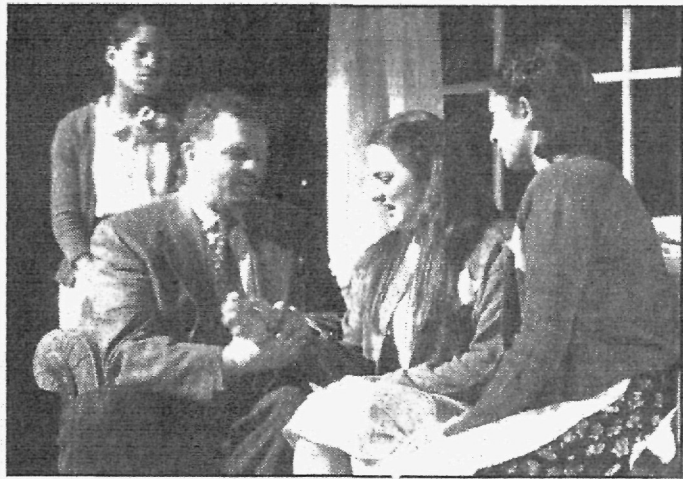


The circus is coming! The circus is coming! Big Apple Circus held its tent raising Tuesday at Commerce Bank Park in Bridgewater, its home for the next month. At top left, crew members help pull the tent out before it is raised. The half-erected tent can be seen at middle left. Taking a walk over the tent while it is being raised is Gidget, seen at bottom left, while Michael LeClair, tent master, is pictured below attaching cables to the big top. For more on the circus' new production, "Step Right Up!," visit www.bigapplecircus.org. Performances are held March 3-25. For more photos from the tent raising, visit blog.nj.com/reporter/

PHOTOS BY GEORGE PACCIELLO/STAFF PHOTOGRAPHER



Employment Education 201 JOB COACH PT The Midland Adult Service, a nationally recognized school/work program associated with the Midland School in North Branch, NJ (Somerset County), is seeking a part-time Job Coach/Aide to train young adults with learning disabilities in-house as well as out in the work force. 5 day position 6 hours per day, high school diploma required. Call: 908-722-7727 EOE A/A	Employment Services 220 FREE CASH GRANTS! \$700. \$800,000+ **2007! ** NEVER REPAY! Personal/Medical Bills, School, Business, Housing, \$49 billion unclaimed 2006! Live Operators! CALL NOW! 1-800-592-0366 Ext.206	General Help 240 ASSEMBLE MAGNETS & CRAFTS FROM HOME! Year round Work! Excellent Pay! No Experience! Top US Company! Glue, Gun, Painting, Jewelry & More! Toll FREE: 1-866-384-1113, code 2	General Help 240 DETENTION OFFICER: Phoenix, Arizona - Maricopa County Sheriff's Office. \$14.99 hr. Excellent benefits, NO EXPERIENCE NECESSARY. Contact: 602.307.5245, 1.877.352.6276, or www.mcsco.org. 400 vacancies including civilian positions.	General Help 240 Field Support /Customer Service DOG LOVERS WANTED ***** Help us keep dogs safe at home! The Canine Fence Company is seeking self-starters to work directly with customers in their homes training their pets to Invisible Fence! This growing, emerging company is the industry leader and offers an excellent benefits package including company car, rotating schedule (includes Saturday), starting pay \$11 an hour with incentives to \$24K/yr. Training provided. Call: (800) 474-0438 x198 THE CANINE FENCE CO. Selected as one of the Top 10 Best Places to Work! EOE	General Help 240 HELP WANTED Earn Extra Income assembling CD Cases from Home. Working with Top US companies. Start Immediately. No Experience necessary. 1-800-405-7619 Ext 104 www.easywork-greatpay.com	General Help 240 GREAT SUMMER JOBS Oak Crest Day Camp Earn \$ and have a fantastic summer! Great Summer Camp jobs. Available for College and HS students, 17+ Teachers and Coaches. • GROUP COUNSELORS • TEEN TRAVEL COUNSELORS • LIFEGUARDS • ATHLETIC SPECIALISTS • CERAMIC SPECIALIST • GYMNASIIC SPECIALIST • NATURE SPECIALIST • COMPUTERS • ROPES • MOUNTAIN BIKES • ARTS AND CRAFTS • ROCKETRY • OFFICE ASSISTANT • BUS DRIVERS Note: you can be a driver in combination with any position and earn a double salary. Drivers must be 21. For a full listing to www.oakcrestdaycamp.com DO NOT WAIT TILL SUMMER Call Jonathan 732-297-2000	General Help 240 MEDICAL ASSISTANT Earn ONE THOUSAND DOLLARS each day with tested, proven, easily duplicatable "Three Step Success System" that is created MILLIONAIRES! 24 hour info line 800-887-3857. Change your life. Call now.	Medical Help 250 7 Dental Office Administrative Assist Full time, experienced, computer literate person with knowledge of administrative, dental insurance and HR. Bachelor's degree. Email resume to: dental_opp_202@yahoo.com	Sales Help 265 SHOWROOM SALES Major \$15 Salary + commission. For our client products. With train. Flemington, NJ 908-371-2399 ext. 127					
Child Care 202 HOUSEKEEPER/CAREGIVER Live in. Must have driver's license and ref's. Flemington area. Call for details 908-581-0492	Employment Agencies 205 Immediate Job Openings! STAFFING ALTERNATIVES Call 732-246-1687	Employment Services 220 \$700-\$800,000+ **2007! ** FREE CASH GRANTS! NEVER REPAY! Personal, Medical Bills, School, New Housing, Business, AS SEEN ON T.V. Live Operators! Call Now! 1-800-592-0366 Ext.207	General Help 240 #1 TRUCK DRIVING SCHOOL. Training Drivers for Encland, Swift & Werner. Dedicated Runs Available. Starting Salary \$50,000+ Home Weekends! 1-888-633-6150	General Help 240 #1 TRUCK DRIVING SCHOOL. Training Drivers for Encland, Swift & Werner. Dedicated Runs Available. Starting Salary \$50,000+ Home Weekends! 1-888-633-6150	General Help 240 #1 TRUCK DRIVING SCHOOL. Training Drivers for Encland, Swift & Werner. Dedicated Runs Available. Starting Salary \$50,000+ Home Weekends! 1-888-633-6150	General Help 240 #1 TRUCK DRIVING SCHOOL. Training Drivers for Encland, Swift & Werner. Dedicated Runs Available. Starting Salary \$50,000+ Home Weekends! 1-888-633-6150	General Help 240 #1 TRUCK DRIVING SCHOOL. Training Drivers for Encland, Swift & Werner. Dedicated Runs Available. Starting Salary \$50,000+ Home Weekends! 1-888-633-6150	Medical Help 250 FT with benefits. For 50+ mg. internal medicine office. Fax resume to: 973-514-1106	Employment Trades 275 ALL CASH CASH ROUTE. For you earn up to \$400/day! Your own local territory. No sales. No franchise fees. 24 Mch. 2007. Call: 800-887-3857					
General Help 240 ACT NOW! CDLA Needed 36.43 cpm/\$1.20pm \$0 Lease NEW TRUCKS CDLA = 3 mos OTR 300-635-8669 CHILD CARE Work in your own home. Apply at Monday Morning Inc 908/526-4884	General Help 240 DATA ENTRY! Work from Home. Flexible Hours. For social Computer. Required. Excellent Career Opportunity. Serious Inquiries Only. 1.800.344.0939 Ext 300	General Help 240 FEDERAL POSTAL JOBS! Now Hiring! Earn \$12-\$18 per hour! No Exp. Full benefits. Paid Training. 1-866-408-2663 ext. 29 Closed Sundays.	General Help 240 FENCE Installers, Laborers, Sub-contractors. Sales. 1-800-282-3245 **FREE CASH GRANTS! **\$25,000+ **2007** NEVER REPAY! Personal, Medical Bills, Business, School House. Almost everyone qualifies! Live Operators. Avoid Deadlines! Listings: 1.800.785.9615 Ext 289	General Help 240 Head Chef/ Kitchen Manager FT. Upscale Eatery in Flemington. 908-246-2667	General Help 240 Help Wanted - ALARM INSTALLATION, CON-TRACTOR NEEDED. MUST HOLD CUR-RENT LICENSE. CONTACT: MI-CHELLE, 801-437-1020 ext. 218 Help Wanted Earn Extra Income, assembling CD cases from home. Start immediately. No experience necessary. 1.800-341-6573 ext 1395 www.easywork-greatpay.com	General Help 240 MOVIE EXTRAS, AC TORS. MODEL! Make up to \$250/day, all looks and ages. 1-800-714-7341	General Help 240 OFFICE COORDINATOR Entry Level FT \$25K. Flemington home care agency seeks responsible individual with excellent communication skills, pleasant telephone manner, good organizational skills and outstanding PC knowledge. We will train. Fax resume to: 908-406-8373 or email resume to: Becky_rateros@gmail.com COMFORT KEEPERS	General Help 240 SUMMER EMPLOYMENT *Pool & Sports Staff *Arts & Crafts *Camp Health Person (EMT, RN or advanced 1st Aide) Hunterdon County Day Camp 908-735-8336 wlnneday@ptd.net	General Help 240 UPSCALE GARDEN CENTER In Greater New Jersey seeks energetic and enthusiastic individual. Responsibilities include ordering, sales, display and care of both plant materials and retail gift merchandise. Experience in both culture and seasonal display is desirable. Please call: Ambleside Gardens 908-359-8388 even: 908-812-1837	Medical Help 250 Part time - home based internet business. Earn \$500-\$1000/mo or more flexible hours. Training provided. For in-vestment returned. Free details: www.k448.com	Part-Time Help 255 Part time - home based internet business. Earn \$500-\$1000/mo or more flexible hours. Training provided. For investment returned. Free details: www.k448.com	Professional Help 260 GOVERNMENT JOBS \$12-\$48/hr Full Benefits. Paid Training. Work available in areas like Homeland Security, Law Enforcement, Wildlife and more! 1.800.326.5583 ext 2002	10 MECHANIC-FORKLIFTS Positions open for experienced Technicians & Trainers. Must have own tools and valid DL. Paid test day & benefits. 732-564-9891	Situations Wanted 280 Polish Referral Svc Inc. Providing live in-out home care for elderly. Licensed & bonded. 908-689-9140



COURTESY SOMERSET COUNTY VOCATIONAL AND TECHNICAL HIGH SCHOOL
In "Anne Frank & Me," cast member Alexandra Niedt, seated center, of Hillsborough, is transferred from the present day to a Jewish household in France in the 1940s during the Holocaust. Also shown are Aliee Chan of Bridgewater, Elise Thomas of North Plainfield and Chris Tomaino of Tinton Falls. The production is scheduled through March 4 at Somerset County Vocational and Technical High School.

Journey shows teens the truth

BRIDGEWATER — Somerset County Vocational and Technical High School's Gifted and Talented Performing Arts Department presents "Anne Frank & Me" by Cherie Bennett. This multiple national award-winning new American classic is about the awakening of a modern teen Holocaust denier, Nicole Burns. She doubts the truth but ultimately comes face-to-face with the horror of the Holocaust, and in an extraordinary sequence — meets Anne Frank on a cattle car to Auschwitz. The story begins with Nicole, played by Alexandra Niedt of Hillsborough, in today's teen world of MTV, hip-hop, unfinished homework assignments and young love. We are all then trans-

ported with her to Nazi-occupied Paris to experience in compelling detail the nightmare that we must never forget. The play ends as we are brought forward again having been forever changed into the hope and determination of the present. Cast members include Somerset County Vocational and Technical High School acting students Ross Baron, Alison Chan, Ashley DelPizzo, Constance Fex, Dane Hammond, Jessica Kinsella, Anthony Ormeta, Jessica Schwartz and Elise Thomas. "Anne Frank & Me" will be performed 7:30 p.m. Saturday, March 3, and 2 p.m. Saturday and Sunday, March 3-4. All tickets are \$10. For additional information or reservations, call (908) 526-8900, Ext 7125.

Pops concert comes to Edison March 18

EDISON — The Edison Arts Society has announced the Edison Symphony Orchestra Season Finale POPS! Broadway and Beyond will be presented 2 p.m. Sunday March 18 at the Middlesex County College Performing Arts Center, 2600 Woodbridge Ave.

The Edison Symphony is conducted by Edison resident Judith Morse.

Special featured soloist, back for her second ESO performance, is Broadway's own Andrea Burns, currently appearing in the Off-Broadway musical "In the Heights."

Burns also performed as Belle in Disney's "Beauty and the Beast" and as Vicky Nichols in "The Full Monty."

The "Official Orchestra of Middlesex County" entertains and delights with Broadway showstoppers, a Salute to 'Ol Blue Eyes, the "Crazy for You" Overture, a Salute to the Big Bands, and much more.

Burns will be performing "Whatever Lola Wants," "This is My Beloved," "Send in the Clowns," "Don't Cry for Me Argentina" and many others. Reserved seats for this concert are currently on sale for \$25. Group rates for 20 or more are available, and both Visa and MasterCard are gladly accepted. Please call the Edison Arts Society office at (908) 753-ARTS (2787) now to reserve best seating. Visit www.edisonsymphony.com for more information on the orchestra.

Volunteers needed for crisis hotline MIDDLESEX — The Middlesex County Rape Crisis Intervention Center is recruiting volunteers to work its 24-hour hotline.

Volunteers must be age 18 or up. People who can speak more than one language are most helpful. Flexible hours, evenings and weekends are available. A recruiting seminar will be held Wednesday, March 7 at the Middlesex Public Library. Each seminar begins at 7 p.m. For registration, call Michelle at (732) 321-1189, Ext. 327. The Rape Crisis Intervention Center is operated by the Middlesex County Public Health Department.

Hebrew speaking group is meeting EDISON — Chug Ivrit is a group for people who speak Hebrew on an intermediate to advanced level. The group meets at 11 a.m. Sunday, March 11 at a home in South Edison. Members speak in Hebrew and read a short story in that language. A crossword puzzle in Hebrew may also be solved. For the meeting location, e-mail rachel@weintraubworld.net or call (732) 819-9298. Chug Ivrit is sponsored by the Raritan Valley Chapter of Hadassah.

Apply now for Adele deLeeuw Applications are being accepted for the 12th annual Adele deLeeuw Scholarships. Students who attend Edison High School, John P. Stevens High School in Edison, South Plainfield High School, Mount Saint Mary Academy in Watchung, Union Catholic High School in Scotch Plains and the Wardlaw-Hartridge School in Edison are eligible. The grants of \$1,000-\$7,000 are offered to high school seniors who plan to study art, engineering, writing, journalism or poetry. Selection is based on academic record and financial need. Previous recipients now in college can also apply. Applications are available from guidance departments at

students' high schools. All applications must be received by Wednesday, March 14.

For more information, contact Sally Young at (732) 381-6269.

Tricky tray planned by the Parker PTO MIDDLESEX — The Parker Elementary School PTO sponsors a Mardi Gras tricky tray auction after Easter. The event is at 8 p.m. Friday, April 27 at Von E. Mauger School on Fisher Avenue. Admission of \$10 includes one sheet of tickets. Food will be available for purchase; no outside food or drink will be permitted. For additional information, call Ruth Zaccardi at (732) 968-4250.

Chinatown focus of new library exhibit EDISON — The Edison Free Public Library opens an exhibit this month on the years "When Newark Had a Chinatown."

The Newark-based Sumei Art Center provides the material for this exhibit, which can be seen March 9-April 20 in the library's Main Branch at 340 Plainfield Ave.

Exhibit looks at the area's 'aquaculture' Two special events are open to the public this month at the New Jersey Museum of Agriculture, New Brunswick. "Aquaculture" is featured in an exhibit opening at noon Saturday, March 10. It covers the history of the oyster, hard clams, food fish and ornamental industries. Kids can work on oyster and clamshell crafts. "Dairy Day" is from noon-3 p.m. Saturday, March 24, when curator Coles S. Roberts makes homemade ice cream the old-fashioned way. See the goats get milked, taste pizza butter and tour the barns. Admission is free for muse-

um members. Cost for non-members is \$4 for adults, \$3 for seniors, \$2 for children ages 4-12 and free for children ages 3-under. For more information, visit www.agriculturemuseum.org or call (732) 249-2077.

The Museum of Agriculture is located at Cook College, on the New Brunswick campus of Rutgers University.

Go global at annual economic summit EDISON — "Go Global" at the second countywide Economic Summit, sponsored by the Middlesex County Board of Chosen Freeholders and Department of Workforce Development.

The summit is at 9:30 a.m. Tuesday, March 13 at the Sheraton at Edison hotel in Raritan Center. Local officials, economic development specialists, businessmen and managers are invited.

As part of the summit workshops on "Emerging Businesses" and "Doing Global Business" are planned. Admission is free. For more information, call (732) 821-1700.

Legislative group to meet for breakfast EDISON — The Employer Legislative Committee holds its monthly breakfast at 8 a.m. Tuesday, March 20 at the Sheraton at Edison hotel, located in Raritan Center.

Assemblyman Samuel D. Thompson, R-13th Dist., is the guest speaker. Cost is \$20. For reservations, call (732) 821-1700.

Open house being held at local school EDISON — The Oak Tree Nursery School, 445 Plainfield Road, holds an open house from 10 a.m.-noon Saturday, March 17.

Parents of children ages 3-4 years old are welcome. Registration materials for the fall term will be available.

DON'T REPLACE YOUR OLD BATHTUB... REGLAZE IT!
We also do Sinks, Tile, Tub Surrounds & Color Travel Charge May Apply
\$349 WICOUPOON regularly \$449
SAVE \$100
www.easternrefinishing.net
EASTERN REFINISHING CO. • 800-463-1879
COUPON EXPIRES 3/14/07

hello, yellow!
goodbye, window worries and budget blues.
• Pella® replacement windows and doors are in style NOW.
• Shop at Home with a Pella professional.
• Relax, we'll install.
• Wide range of choices — Pella fits your style and budget.
Replace your windows now and receive a heating bill rebate of up to \$500!!
BRANCHBURG, NJ 952 ROUTE 202
EDISON, NJ 800 US HIGHWAY 1 N
FAIRFIELD, NJ 20 PASSAIC AVE
MORRIS PLAINS, NJ 3025 ROUTE 10 E
NANUET, NJ 80 EAST ROUTE 59
PARAMUS, NJ 483 ROUTE 17 S
SHREWSBURY, NJ 159 EAST NEWMAN SPRINGS RD
SPRINGFIELD, NJ 659 MORRIS TRPK
STATEN ISLAND, NY 1424 RICHMOND AVE
WALL, NJ 1985 HIGHWAY 34
CALL TOLL FREE 1-877-51-PELLA
email: Pellainfo@luxhome.com
Pella window & door replacement **sale**
Does not apply to Pella® products. Other restrictions may apply. See sales representative for details. Must be installed by Pella professionals. Not valid with any other offer or promotion. Valid for replacement projects only. Price sales excluded. Offer does not apply to multi-chambered households. Financing available to qualified customers only. Rebate given on one of purchases. Rebate offer applies to product only. Minimum purchase required. Rebate based on 12% of retail list price to a maximum of \$500. Offer ends March 20, 2007.

DUNELLEN HOTEL
Back By Popular Demand
Continuing in March
Every Monday & Tuesday
Alaskan King Crab Legs for \$17.95
Weekly Special
Every Thursday is Prime Rib Night!
99¢/oz for 8 oz. & Up, Custom Cut Dinner
120 N. Washington Avenue
Dunellen, New Jersey
732.968.2900
www.dunellenhotel.com

Legal Notices
NOTICE TO ABSENT DEFENDANTS
JESUS M. DEARMAS, HIS HEIRS, DEVISEES AND PERSONAL REPRESENTATIVES, AND HIS HEIRS, OR ANY OF THEIR SUCCESSORS IN RIGHT, TITLE AND INTEREST
You are hereby summoned and required to serve upon FRANK J. WARTOBE, P.C., Plaintiff's Attorney, whose address is 1455 Broad Street, Bloomfield, New Jersey, 07003, an answer to the complaint and amendment to complaint, if any, filed in a civil action in which THE PROVIDENT BANK NATIONAL TRUST COMPANY, AS TRUSTEE FOR THE CERTIFICATE HOLDERS OF SOUNDVIEW HOME LOAN TRUST 2006-0P12, ASSET-BACKED CERTIFICATES, SERIES 2006-0P12 is Plaintiff and AMY PATEL, et al., and defendants, pending in the Superior Court of New Jersey, Chancery Division, MIDDLESEX County and bearing Docket No. F-22730-06 within thirty (30) days after judgment by Default may be rendered against you for the relief demanded in the Complaint. You shall file your answer and proof of service in duplicate with the Clerk of the Superior Court, Hughes Justice Complex, CN-971, Trenton, New Jersey 08625, in accordance with the Rules of Civil Practice and Procedure.
This action has been instituted for the purpose of (1) foreclosing a mortgage dated February 17, 2006 made by AMY PATEL as mortgage to OPTIMA LIFE MORTGAGE CORPORATION as recorded on August 10, 2006, in Book 1775 of Mortgages for MIDDLESEX County, Page 824, and (2) to recover possession of and contents of the premises commonly known as 721 GOSHEN DRIVE, BERTH AMBRO, NJ 08861.
If you cannot afford to obtain an attorney, you may communicate with the Legal Services Office of the County of venue by calling 732-249-7600.
Dated: February 27, 2007
THEODORE J. FETTER
CLERK OF THE SUPERIOR COURT
\$22.00 842.11.3307
BOROUGH OF MIDDLESEX
NOTICE OF ORDINANCE INTRODUCTION
ORDINANCE NO. 1710-07
AN ORDINANCE ADDING A NEW SECTION TO THE BOROUGH CODE ENTITLED "RAFFLE AND BINGO LICENSING"
The above ordinance was introduced at a public meeting of the Borough Council of the Borough of Middlesex, the County of Middlesex, New Jersey, held on February 27, 2007 and will be further considered for the final passage after a public hearing at a Public Meeting of said Borough Council to be held at the Municipal Building in said Borough on March 13, 2007 at 8:00 PM.
Kathleen Anelli, RMC
Borough Clerk
843.11.3307
NOTICE TO ABSENT DEFENDANTS
JESUS M. DEARMAS, HIS HEIRS, DEVISEES AND PERSONAL REPRESENTATIVES, AND HIS HEIRS, OR ANY OF THEIR SUCCESSORS IN RIGHT, TITLE AND INTEREST
You are hereby summoned and required to serve upon SHARON & DIAZ, LLP, Plaintiff's Attorney, whose address is 41E Lippincott Drive, Suite 200, Milltown, NJ 08851, an answer to the complaint and amendment to complaint, if any, filed in a civil action in which DEUTSCHE BANK NATIONAL TRUST COMPANY AS TRUSTEE FOR THE CERTIFICATE HOLDERS OF NEW CENTURY HOME EQUITY LOAN TRUST, SERIES 2005-B, ASSET BACKED PASS-THROUGH CERTIFICATES is Plaintiff and WARREN RUSHING, JR. AND GLENDA RUSHING, JR. AND GLENDA RUSHING, HUSBAND AND WIFE, are Defendants, pending in the Superior Court of New Jersey, Chancery Division, MIDDLESEX County and bearing Docket # F-4662-07 within Thirty-five (35) days after the date of the publication, inclusive of such date, if you fail to do so, judgment by default may be rendered against you for the relief demanded in the complaint and amendment to complaint, if any. You shall file your

Campus Notes
Joseph J. Dezmín Jr. of South Plainfield received a bachelor's degree in history and economics from Bucknell University in Lewisburg, Pa., in January. The son of Joseph and Susan Dezmín is a 2002 alumnus of South Plainfield High School. * * *
The following students were honored for academic achievement during the second marking period at Our Lady of Mount Virgin School, Middlesex.
Principal's List
4th Grade: Zachery Cerebe, Erin Hendrak, Sydney Kukoda, Vikas Kwatra and Randi Rhinehardt.
5th Grade: Nicholas Buchinski, Caitlyn Doherty and Megan Doherty.
6th Grade: Renae Goyajian, Nicholas Cocco, Giana Guarino, Janelle Kratz and Brett Schweyer.
7th Grade: Diane Arlotta, Regina Mitossis, Gregory Monteleone and Nicolette Reilly. 8th Grade: Gabriella Guarino, Ryan Langton, Nicole Lyons, Jacqueline McNulty, Briana Nolan, Nicolette Schweyer and Benjamin Tanchyk.
Honors
4th Grade: Gianni Buarne, Joseph Cella, Kiera Cullinan, Alyssa DiVincenzo, Kirsten Helmstetter, Richard McNulty, Kaitlyn Roberto, Victoria Schweyer, Bailee Zakashefski and Natalie Zychlinski. 5th Grade: Alexis Chaparro, Peter Falgiano, Sophie Ghizzone, John McDonough, Angelica Neer, Brianne Pizzigoni, Brooke Prohaska, Allison Spencer and James Surace
6th Grade: Brian Fitzpatrick, Cortney Hanson, Dylan Hoski, Christopher Lyons, Joseph McNulty, Ryan Neal and Andrew Winkleman.
7th Grade: Kelly Benning, Francesca Buarne, Jessica Czarkowski, Alexandra Fasanella, Kaleigh Fasanella, Marley Ghizzone, Nicholas Honis, Robert Lawler, Daniel Phillips, Bryan Prohaska, Ryan Randall and Brielle Zakashefski.
8th Grade: Marisa Avolio, Bryan Brock, Nicholas Costantino, Ryan Eustace, Nicholas Falgiano, Shannon Hanson, Katelyn Laeyt, Kyle Madden, Louis Pizzigoni, Holly Polakiewicz and Christopher Winkleman.
Merit
4th Grade: Catherine Esposito, Matthew Hollan, Jenna Martemucci, Christopher Massarelli, Mary Kate McKeown, Kevin Meier, Ragen Reddick, Samuel Riyad, Joseph Salerno and Ashley Torres.
5th Grade: Pierre Boco, Zachary Condon, Matthew Ciliberto, Ashley Field, Marissa Geist, Angelique Kerbrat, Loving Kwatra, Arista Parillo, Nicolette Pizzigoni and Sean Sarnoski.
6th Grade: Natalie Castello, Thomas Helmstetter, Thomas Marcinczyk, Theresa Orth, Marisa Pazar and Brennan Price.
7th Grade: Tara Brett, Joseph Gonzalez and Catherine Kerwin. 8th Grade: Romnick Reyes.

Public Notices Online
www.njpublicnotices.com

PLACE YOUR AD 24 HOURS A DAY, 7 DAYS A WEEK AT: 800.559.9495

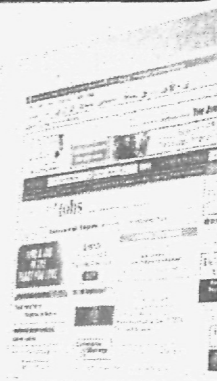
Count on us Classifieds Somerset County



From across the street to across the state, The Reporter & nj.com has what you're looking for!

We're powered by New Jersey's largest web site for local news & information - nj.com!

Everything Jersey www.nj.com/placead



Classification 1385 Employment Classification 201 Merchandise Classification 550 Classified In-column deadline: Monday at 5 p.m.

BIG CLASSIFIEDS Auctions Broad Street Antiques 110 Broad Street, Flemington, NJ (908) 788-2727

Announcements 105 BUY NEW JERSEY FOR \$415! The New Jersey Press Association can place your 25 word classified ad in over 140 NJ newspapers...

Announcements 105 GWEN SWEET MEMORIAL SHOW. Artist's heirs hosting July show of originals: Country Library - Surf City, Owners wanting originals appraised, cataloged, considered for show contact Jane Moore 609-680-3090.

Notices 115 Each week hundreds of Public Notices are published in New Jersey's daily and weekly newspapers! The New Jersey Press Association has created a internet database where these notices are posted...

Drivers 230 SCHOOL BUS DRIVERS Athletics/Field trips/Routes. For Hillsborough/Flemington areas. CDL, BPS preferred. \$17 per hour! Call Hager Bus: 908-788-9755

General Help 240 Field Support/Service DOG LOVERS WANTED Help us keep dogs safe at home! The Canine Fence Company is seeking self-starters to work directly with customers...

General Help 240 ORTHODONTIC TECHNICIAN Rapidly growing Ortho lab has immediate F/T Mon-Fri daytime openings for a dependable person to join our team...

BIG CLASSIFIEDS Education Careers DELAWARE VALLEY REGIONAL HIGH SCHOOL has the following openings: Biological Science Teacher - Maternity leave coverage - March through June.

Child Care 202 HOUSEKEEPER/CAREGIVER Live in. Must have driver's license and ref's. Flemington area. Call for details 908-581-0492

Employment Agencies 205 Immediate Job Openings! STAFFING ALTERNATIVES Call 732-246-1687

8 Camp Nurse/EMT GREAT SUMMER JOB! Somerset area day camp. Competitive pay and tuition incentives available.

5 DATA ENTRY! Work From Anywhere. Flexible Hours. Personal Computer Required. Excellent Career Opportunity.

7 Dental Office Administrative Assist FT: Exp'd, organized, computer literate person with knowledge of scheduling, dental insurance, and Aff. Neshanic Station. Email resume to: dental_opp_202@yahoo.com

BIG CLASSIFIEDS Driving Careers Bridgewater Driving School Seeks Driving Instructor(s) Experienced CDL Drivers Immediate openings in/near Hunterdon for local work. Class A, starting at \$20 an hour, Class B, starting at \$17 an hour.

6 BUS DRIVERS! Great Summer Job! (don't wait till Spring!) 16 passenger A/C vans. Great Routes. Competitive pay \$18+ per hr!

HELP WANTED Earn Extra Income assembling CD Cases from Home. Working with Top US companies. Start Immediately. No Experience necessary.

9 MECHANIC-FORKLIFTS Positions open for experienced technician & trainee. Must have own tools and valid DL. Excellent pay & benefits. 732-564-9891

DRIVER WANTED (CDL REQUIRED) KASPER'S Disposal Service 908-782-4962 EOE

CHAUFFEURS FT/PT For fast growing limo company located in western Hunterdon County, NJ. No experience necessary. 908-479-6278

Count on us

BIG
CLASSIFIEDS

Careers

BIG
CLASSIFIEDS

ENVIRONMENTAL HEALTH COORDINATOR

County of Hunterdon, Department of Health

As the director of the environmental unit, plans, organizes, and assigns the work of the organizational unit and evaluates employee performance and conduct, enabling the effective recommendation of the hiring, firing, promoting, and disciplining of subordinates.

Participates in the planning, development, administration and evaluation of environmental health policies.

Assigns and supervises the work of the subordinate personnel engaged in the enforcement of environmental and/or health laws, regulations and ordinances through such enforcement actions as abatement letters, administrative hearing, summonses, court actions and condemnations in environmental protection and/or environmental sanitation matters.

Ensures the proper training, assignment and evaluation of all personnel assigned to the unit.

Develops and maintains liaison with various local, state, federal agencies, professional and public interest groups interested in preserving the environment and assists groups in developing environmental health projects.

Supervises the establishment and maintenance of records and files.

EDUCATION:

Graduation from an accredited college or university with a Bachelor's degree in one of the biological, environmental health hazards in one or more areas of environmental health, three (3) years of which shall have been in a supervisory capacity.

EXPERIENCE:

Six (6) years of experience in work involving identifying, preventing, or eliminating environmental health hazards in one or more areas of environmental health, three (3) years of which shall have been in a supervisory capacity.

NOTE: A Master's degree in any one of the above fields may be substituted for one (1) year of indicated non-supervisory experience.

LICENSE:

Appointees will be required to possess a driver's license valid in New Jersey only if the operation of vehicle rather than employee mobility is necessary to perform the essential duties of the position.

Possession of a valid Registered Environmental Health Specialist license issued by the New Jersey Department of Health and Senior Services will be required.

Send job application, resume and salary requirements to:

Hunterdon County Human Resources Department
PO Box 2900
Flemington, NJ 08822
AN EQUAL OPPORTUNITY EMPLOYER

Restaurant Help

Part-time Bartenders and Servers. Experienced, for Flamangos in Whitehouse Station.
908-534-6900



HOURLY MANUFACTURING LABORERS

Georgia-Pacific Corporation, Dixie Products, Fortune 100 Company, located six miles south of Stockertown, PA in Forks Township Industrial Park, has a need for Manufacturing Laborers in our Paper and Plastic manufacturing operations.

Qualifications are you must be 18 years of age, have a GED or high school diploma, a current drivers license and reliable transportation. You also must be willing to work any day of the week 12-hour shifts, either 7:00 a.m. to 7:00 p.m. or 7:00 p.m. to 7:00 a.m.

The starting wage for these positions is \$10.18 per hour with increases after 60 days from \$10.77-\$11.78 per hour.

The selected individuals will be eligible for a comprehensive benefit package, including healthcare, dental, pension, life insurance and a 401(K).

Anyone interested in becoming a Georgia-Pacific employee, please call the following telephone number to set up an appointment for an interview.

610-250-1515

We are an equal opportunity employer
M/F/D/V - EOE



BIG
CLASSIFIEDS

Careers

Warranty Supervisor
For many drywall companies for work in North Jersey.

Must have excellent customer service relations as well as drywall experience. Must have own tools and reliable transportation. Excellent pay and benefits. Call: 908-638-5001, Wed-Fri, 8-4 or Fax Resume: 908-638-5004

Hair Stylist
Upscale salon in Flemington. Sign-on bonus with following.

Receptionist
Part-Time, evenings and Saturdays. Good phone skills required.
call: 908-797-9584

Restaurant
The Sergeantsville Inn has an immediate opening for **Sous Chef** Experienced Only

Please contact Joe or Lisa: 609-397-3700

Secretarial
Flemington Pa seeks fun, enthusiastic individual to work with office staff. Full or part-time positions. Must enjoy working with customers. Experience helpful, but not necessary. Must be willing to learn.

Call Christina Rucker at 908.782.2212 to arrange an interview.

LANDSCAPE CO.
Seeks knowledgeable, motivated and dependable individuals for Full-Time positions. Knowledge of Plant Material and construction techniques preferable. Valid driver's license. Competitive pay, benefits.
Call 908-788-5632 or 908-507-1786

Stylist/Manicurist
Needed for Salon in Flemington. Great atmosphere and friendly staff. \$1000 Bonus with following. Call for details. (908) 782-9350

Counter Person
Needed for Power equipment store. Lawn & Garden and recreational vehicles. Requirements; customer sales of parts and inventory, computer exp. and a pleasant personality a must. Exc. pay and benefits.
Walt's Outdoor Center 908-782-5654

Landscape Construction
Experienced high quality crew leader needed. Must have driver's license. Pay based on experience. Call: 908-369-5899

Warren Township Schools
Immediate Opening for **PART-TIME SCHOOL BUS DRIVER**
Must possess a CDL with passenger and School Bus Endorsement.
Contact: Mrs. Diana Raucci Transportation Coordinator 94 Mountain Avenue Warren, NJ 07059 908-647-9155

Expanding lawn & tree care company hiring for the following positions:
Office Staff
Sales Person
Lawn Applicators
Applicants must have valid drivers license
Contact 908-875-1525 to schedule interview.

SWIM TEAM COACH
The Borough of Washington, Warren County, NJ has a position opening for a Swim Team Coach for its 100-member team. All applicants must possess 2+ years of swim coaching experience. References must be supplied.
If interested call 908-689-3600 or write to the Borough at 100 Belvidere Avenue, Washington, NJ 07882 for an application. All applications must be returned by March 19, 2007. The Borough is an EEO and AA employer.

Professional Catering Coordinator
Prior experience a must. Full or part time.

Servers & Bartenders
Part time.

Please email resume to kitchen@gottahavedish.com



Ophthalmic Tech
Needed FT for practice located in Middlesex and Somerset County. Prior experience a must. Full benefits package.
Please fax resume to HR 732-356-9257

Situations Wanted 280
Polish Referral Svc Inc. providing live-in-out housekeeper for elderly. Licensed & Bonded 908-689-9140

Real Estate Sales
Acres & Lots 305
LAKE ONTARIO LAND BARGAIN! 14 acres - \$29,900 Adjoins State Land! Field, woods, lake views. Boat launch/beach, just down the road! Build, hunt, fish, or invest in a rare find! Owner terms! Won't last! Call 800-890-1186 today! www.moosriverland.com

Condos & Townhouses 320
All real estate advertising in this newspaper is subject to the Federal Fair Housing Amendments Act and the New Jersey Civil Rights Law, which make it illegal to advertise any preference, limitation or discrimination based on race, color, religion, sex, national origin, handicap, familial status, creed, ancestry, marital status, affectional or sexual orientation, or nationality, or an intention to make any such preference, limitation or discrimination. Familial status includes children under the age of 18 living with parents or legal custodians, pregnant women and people securing custody of children under 18. This newspaper will not knowingly accept any advertising for real estate which is in violation of the law. To report discrimination, call the Office of Fair Housing and Equal Opportunity of the U.S. Department of Housing and Urban Development (HUD) at 1-800-669-9777. The HUD TTY telephone number for the hearing impaired is 212-708-1455.

Homes For Sale 330
4bd, 2 ba. HUD Home for only \$175/mo! 3 bd, 1 ba. Only \$200/mo! More HUD Homes from \$199/mo! For listings call 800-546-8656 ext.578

BANK FORECLOSURES! Homes from \$10,000! 1-3 bedrooms available! HUD, Reps, FDIC, FSBO, FHA etc. These homes must sell! For listings Call: 1-800-425-1620 ext 3421

Buy a 3 bd. Bank Repo only \$250/mo! 5bd, 1.5 ba. Only \$375/mo! 5% dn, 20 yrs @ 8% APR! For listings call 800-546-8656 x722.

JUST LISTED
"Count On Us For Results" To Advise Your Listings Call Nancy 908-894-1066

PUBLISHER'S NOTICE
All residential real estate advertising in this newspaper is subject to the Federal Fair Housing Act of the New Jersey Law Against Discrimination and Pennsylvania Human Relations Act. These laws prohibit any real estate advertising that includes or implies the sale, rental or financing of dwellings on the basis of race, color, sex, religion, national origin, ancestry, marital status, affectional or sexual orientation, or nationality, or an intention to make any such preference, limitation or discrimination. Familial status includes children under the age of 18 living with parents or legal guardians, pregnant women and people securing custody of children under 18. In addition to the protections noted above, New Jersey law prohibits discrimination based on creed, ancestry, marital status, affectional or sexual orientation, or nationality, and Pennsylvania law prohibits discrimination on the basis of age, disability or ancestry. This newspaper will not knowingly accept or print any advertising for residential real estate which violates the law. To report housing discrimination call the Office of Fair Housing and Equal Opportunity of the U.S. Department of Housing and Urban Development (HUD) at 1-800-669-9777. The HUD TTY telephone number for the hearing impaired is (212) 708-1455. In New Jersey call the Division of Civil Rights in the Department of Law and Public Safety at 609-984-3100. In Pennsylvania call the Pennsylvania Human Relations Commission at (717) 787-4410 or the Fair Housing Council of Suburban Philadelphia at (610) 664-4411.

Homes For Sale 330
New Single-Family Homes in active adult (.55 plus) community in historic Smyrna, Delaware, near Beaches and Bays. From \$99,900. 302-659-5800 or see www.bonayrehomes.com

Income Property For Sale 335
RedWeek.com #1 timeshare market place. 15,000+ re-sales, rentals, resort reviews at 5000+ resorts. Before you buy, rent, or sell you must visit RedWeek.com to compare.

Out of State Property 355
CORBIN HALL Gated, private community on Atlantic side of Virginia's Eastern Shore. 1+acre lots available from \$130K to \$650K with immediate, deepwater access to Chincoteague Bay. Amenities include community pier, boat launch & beautiful cottages. Call 757-854-3900 www.corbinhall.com

HOLDEN BEACH, NC: Free brochure Alan Holden Vacations, 800-720-2200, www.holden-beach.com and on-line booking. Sales tool RE/MAX at the Beach, www.AtthebeachNC.com; Holden Beach: 800-360-9770, Sunset Beach: 888-414-Sell (7355), Oak Island: 866-350-SOLD (7653), Calabash: 800-765-3203.

NC MOUNTAINS Large 2 to 10 acre tracts in last phase of popular gated mountain community with great view, trees, waterfall & large public lake nearby, paved private access, \$69,500 and up, call now 866-789-8535

NORRIS LAKE PROPERTIES- Waterfront #902, .77ac's only \$125,000. Lake view #122, 3.5ac's only \$48,900 Call Lakeside Realty 1-888-291-5253 www.lakesiderealty-tn.com

NY TOP-RATED LANDS. Best Statewide Locations. Private, Wildemess, getaways! Adirondack region- 274 Acres @ \$189,900, NY/PA Border 43 Acres @ \$89,900, Central NY Lakefront 25 Acres @ \$169,900, Call Christmas & Associates, 800-229-7843, www.landandcamps.com

TENNESSEE LAKEFRONT
Dockable, available to buy NOW! Access site with covered dock \$59,900. Direct Lakefront \$139,900. Developer/Owner. 877-242-5263

TENNESSEE MOUNTAIN ACREAGE GRAND OPENING!
Limited offer! 3 Days/2 Nights A \$450 Value ONLY \$99.00 To Tour Property Call Now 866-551-5263

TENNESSEE Premier Land Sales! 1-3 acre homesites. Waterfalls, lakes, bluffs & paved roads, utilities. Horseback riding, golf, fishing, white water rafting. Owner financing, low down payment! 1-888-811-2158; www.TNlots.com

Real Estate Wanted 360
HOMEOWNERS WANTED! Kayak Pools looking for Demo homesites to display new maintenance free Kayak pools. Save thousands of \$\$ Unique opportunity! 10% financing available. 1-800-510-5624

SHARE FREE VALUABLE SECRETS! Sell, rent, exchange any property 100%. No commissions, no lead fees, or subscriptions. Worldwide Agents and FSBO. Guaranteed. 1-866-999-3929 www.PremierPropertyArts.com

Vacation Property For Sale 380
MYRTLE BEACH, SC- NEW OFFERING! WILD WINGS GOLF PLANTATION LAKE FRONT AND GOLF COMMUNITY World Class Amenities, 27 Hole Championship Golf Course, Great Boating and Fishing. Central Location near Beach and 100+ Golf Courses, Medical and Shopping. No Time Limit to Build. NO PAYMENTS FOR ONE YEAR! Lake, Lake Front, Golf, Preserve and Resort Home sites from the \$130K's. Limited Offer. Hurry and Call 888-243-0143

Real Estate Rentals
Apartments 405
ANNANDALE-1 BR, 2nd fl apt. Bright mas, full BA, lg patio, close to 78 and train. \$795 mo + utility and sec. No pets smoking. 908-735-7749

Dunellen: Beautiful studio apt for rent by train & bus. \$800/mo no pets. 732-421-0033

Dunellen: Great 2BR apt, fully renovated, \$1,090/mo, no pets 732-421-0033

Real Estate Rentals

Apartment 405

MUST SEE

FLEMINGTON- 1BR apt \$875; Exc. location, brand new kitchen with d.w. w/d, parking, 908-604-2774.

N Plainfield-North of RT 22 1BR \$745+ utilities, laundry, NO PETS Ref's. 908-561-5085

SUMMIT- Quiet 1 BR, 1 Ba, downtown, prng. W/D hot wr & ht incl, \$1095, mo. Avail 908-420-1810

Commercial Property For Rent 410

Competitive Pricing

MUST SEE!

FLEMINGTON PLAZA I Commerce St Various Sizes 1st Class Retail and Office Space 600-7500 s.f. 908-782-7043

Check this out

Flemington Area Automotive Repair Shop 3 Bays w/lifts, 1 w/front end alignment machine, A/C in office & shop. Looking for ideal person to lease shop from owner. 908-806-0184

Flemington RT 12 Business Park 2750 sf and Larger Flex Lease Terms. Avail March/Ample Prng High Ceilings Will fit out to needs. Each unit 1 ncl Office w/ADA Bath Alex 908-782-1555

Houses For Rent 430

4bd, 2 ba. HUD Home for only \$175/mo! 3 bd, 1 ba. Only \$200/mo! More HUD Homes from \$199/mo! For listings call 800-546-8656 ext.578

Buy a 3 bd, Bank Repo only \$250/mo! 5bd, 1.5 ba, Only \$375/mo! 20yrs @ 8% APR! For listings call 800-546-8656 ext.722.

West Amwell Contemporary 1BR,1Ba, House on Historic Farm. Luxury Aprt., 2 Car Gar. Maintenance and Heat Incl.\$1600./mo 609737-2130

Housing To Share 435

Clinton Area Roommate to share 2 BR house. Country setting. \$560 mo + utilts. 908-328-7222

Rooms 460

Branchburg Rt 22 West furnished, utilts & cable incl. (kitchenette optional). \$195 & up weekly 908-328-3049

Vacation Property For Rent 480



SEASIDE PARK, NJ Great loc. ocean views, seconds to the beach, lg 4 Br, \$1975/wk, 2 BR like new \$1300/wk, off season rentals avail also. 910-233-5701

TIMESHARE *RESALE* SAVE 60-80% OFF RETAIL!! BEST RESORTS & SEASONS. Call for FREE TIMESHARE MAGAZINE! Open 7 days a week! 800-639-5319 www.holidaygroup.com/flor

Timeshare Resales. The cheapest way to Buy, Sell, and Rent Timeshares. No Commissions or Broker Fees. Call 1-800-640-6886 or go to www.buytimeshare.com

Merchandise

Building Material & Equipment 520

Metal Roofing & Siding. Buy Direct. We Manufacture & cut to your length .10 closeout colors, 36" coverage ABXX Panel \$1.45 LF. 1-800-373-3703 www.abmartin.net

Furniture 560

LIVING ROOM SET Oak w/ entertainment center, \$700 obo. Call 908-768-0877

1

Sofa+Loveseat New \$299 Dining Room New \$899 Also model house furn. Can del 908-281-7117

Bargain Basement 573

Dryer: Whirlpool Super Capacity, gas, white, exc cond., \$65. Fred 973-689-2913

General Merchandise 580

BOOKS & CERAMIC MOLDS Call Paul at 908-347-5236

General Merchandise 580

CASH PAID FOR Used Dish Network Satellite Receivers. (NOT THE Antenna Dishes). Highest Price Paid (\$669/42" x 8.3" x1067) Have receiver and model number when calling!

CHERRY BEDROOM SET Solid Wood, never used, brand new in factory boxes. English Dovetail. Original cost \$4500. Sell for \$795. Can Deliver. 201-780-8911

CHERRYWOOD DINING SET 10 Pcs. Solid wood original box, can deliver. Original cost \$6500, sell for \$1599 JOHN 201-256-6259.

Couches: 1 tan, 1 olive green, great cond. \$450 for both / \$275 ea. 908-566-5122

DIRECTV FREE 4 Room System! NO Credit Card Required! 250+ Channels! Starts \$29.99! FREE DVR or HD Receiver Also, Dish Network \$19.99! FREE Movie Channels! 1-800-574-2260

DIRECTV Satellite Television. FREE Equipment, FREE 4 Room Installation, FREE HD or DVR Receiver Upgrade w/ Rebate. Packages from \$29.99/mo. Call 1-800-380-8939

ITALIAN LEATHER LIVING ROOM SET in original plastic, never used. Original price \$3,000, sacrifice \$975. Bill 732-226-4123.

Mausoleum 2 crypts Woodbridge Memorial Gardens, \$5,000 OBO. 908-754-5556

NEW FEATHER WEIGHT MOTORIZED WHEELCHAIRS, at no cost to you if eligible. Medicare & Private insurance accepted. ENK Mobile Medical. 1-800-693-8896.

PRESCRIPTION LESS THAN CANADIAN! MONTH: Viagra \$2.75/pill. Flomax \$27.00, Fosamax \$15.00, Plavix \$45.00, Singulair \$51.00. Norvasc \$26.00, Advair \$50.00, Vioxin 10/20 \$63.00 Global Medicines 1.866.634.0720 www.globalmedicines.me

Lawn & Garden 581

LANDSCAPING TRAILER: 5x10, heavy duty 15" tires 4 gate. 1 yr old, \$900. 908-451-0704

Musical Instruments 585

I Buy GUITARS & ALL MUSICAL INSTRUMENTS. Call Rob 609-577-3337

Wanted To Buy 625

All Lionel & Other Trains Top cash prices pd. 973-334-8709 or 201-404-8030

Pets

Pets 640

PAPILLION PUPS rare toy breed. Very friendly, \$700. Call 908-730-8389.

Business Opportunities 650

1000 ENVELOPES = \$5000. Receive \$5 for every envelope stuffed with our sales material. Guaranteed! Free Information: 24 hour recording 1-800-423-2089

\$3676+ Weekly Guaranteed This Data Business Is Making Us Rich! Work From Anywhere. No Risk. Automated. Opportunities Available For Anyone. Register Online Now. www.TopJobsReview.com

***\$700-\$800,000 Free Cash Grants! 1-2007! Never Repay! Personal/Bills, School, Business/Housing, AS SEEN ON T.V., Live Operators. Listings 1-800-274-5068 Ext. 240

ABSOLUTE GOLDMINE! \$5000/mo Income attainable by 3rd month. First year potential of \$10,000-\$30,000 per month, very attainable. Hot test product in 40 years. It sells itself. TIMING IN EVERYTHING Call 800-323-0298 recorded message

AIRLINES ARE HIRING. Train for high paying Aviation Maintenance Career. FAA approved program. Financial aid if qualified. Job Placement assistance. Call Aviation Institute of Maintenance. (888-349-5387)

ALL CASH CANDY ROUTE Do you earn \$800 in a day? Your own local candy route. Includes 30 Machines and Candy. All for \$9,995 800-893-1185

ALL CASH VENDING! Call us first or call us last, either way we can save you \$55. Under 9k investment required. No money-back guarantee included. Toll Free 800-961-6149 (24/7)

Financial/Business

Business Opportunities 650

ALL CASH Vending! Call us first or call us last, either way we can save you \$55. Under 9k investment required. Toll Free 800-961-9189 (24-7)

CONTRACTORS/RENOVATORS: Expand your business, increase sales by offering an attractive line of deck & railing products. Supplying trades people since 1978 Website: www.globaldecking.com r 800-804-6288

Cruise & Travel the World! Play Lots of Golf. Raise Money for Charities. Earn Awesome Income! www.sgsrepresentations.com 800-516-8767

Earn \$1,000- \$6,500 DAILY! The PERFECT Home-Business. 5.9 Trillion Dollar Travel Industry Needs You! *You Just Place Ads Like This! *We Take Your Calls! *We Close Your Sales! Get Started -Only \$1,995. Call Today! 1-800-378-1169 X702 ID#4569LJ Visit: WWW.QuickSuccessToday.com *Leave Info

Millionaire Minds\$ What's the secret to earning \$5K. in less than 1 hr. of your time? 1-800-985-4260

OFFICE CLEANERS OPPORTUNITIES Start Today! Part-time/Full-time Day or Night Flex Hrs possible \$17.00 per call 1-900-835-9300

Post Office Now Hiring. Avg. Pay \$20/hour, or \$57K annually including Federal Benefits & OT. Paid Training, Vac. PT/FT. Small upfront fee. 1-800-884-1775 Ext. 3801 USWA

REAL ESTATE INVESTORS wanted. Private Developer in PA Suburbs. Currently 95 Investors. \$15M assets. Also, Soft Pretzel Bakery franchises for sale. Call Roman Fitzmartin 215-348-5508

Real Income Producer! I Will show you how I make 50-80k per month online, step by step, its easy! if you are tired of not making money on the Net and want something that really works, then go to: www.easypromote.com NOW! live info call tue&thur & pm east 212-990-8000 pin 29356 My # 732-901-8736

Financial/Business

Business Opportunities 650

FREE CASH GRANTS! \$700. \$800.000+ ***2007! ** NEVER REPAY! Personal/Medical Bills, School, Business, Housing, \$49 billion unclaimed 2006! Live Operators! CALL NOW! 1-800-592-0366 Ext.208

Mattress Cleaning & Sanitizing Business. 4,300 European Dealers. New to Canada & US. Removes dust mites and harmful allergens, Big Profits, small investment. HygienTech 1-888-999-9030 www.hygientech.com

Movie Extras Make up to \$250/day All looks and ages 1-800-714-7501

Movie Extras Make up to \$250/day All looks and ages 1-800-714-7501

OFFICE CLEANERS OPPORTUNITIES Start Today! Part-time/Full-time Day or Night Flex Hrs possible \$17.00 per call 1-900-835-9300

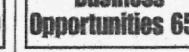
Post Office Now Hiring. Avg. Pay \$20/hour, or \$57K annually including Federal Benefits & OT. Paid Training, Vac. PT/FT. Small upfront fee. 1-800-884-1775 Ext. 3801 USWA

REAL ESTATE INVESTORS wanted. Private Developer in PA Suburbs. Currently 95 Investors. \$15M assets. Also, Soft Pretzel Bakery franchises for sale. Call Roman Fitzmartin 215-348-5508

Real Income Producer! I Will show you how I make 50-80k per month online, step by step, its easy! if you are tired of not making money on the Net and want something that really works, then go to: www.easypromote.com NOW! live info call tue&thur & pm east 212-990-8000 pin 29356 My # 732-901-8736

Financial/Business

Business Opportunities 650



Post Office Now Hiring. Avg. pay \$20/hr or \$57K annually including Federal Benefits & OT. Paid Training, Vac. PT/FT. Small upfront fee. 1-800-884-1775 x1100 USWA

Post Office Now Hiring. Avg. Pay \$20/hour or \$57K annually including Federal Benefits and OT. Paid Training, Vacations, PT/FT 1-800-584-1775 Ext. 3801 USWA

REAL ESTATE INVESTORS wanted. Private Developer in PA Suburbs. Currently 95 Investors. \$15M assets. Also, Soft Pretzel Bakery franchises for sale. Call Roman Fitzmartin 215-348-5508

Real Income Producer! I Will show you how I make 50-80k per month online, step by step, its easy! if you are tired of not making money on the Net and want something that really works, then go to: www.easypromote.com NOW! live info call tue&thur & pm east 212-990-8000 pin 29356 My # 732-901-8736

REAL ESTATE INVESTORS wanted. Private Developer in PA Suburbs. Currently 95 Investors. \$15M assets. Also, Soft Pretzel Bakery franchises for sale. Call Roman Fitzmartin 215-348-5508

REAL ESTATE INVESTORS wanted. Private Developer in PA Suburbs. Currently 95 Investors. \$15M assets. Also, Soft Pretzel Bakery franchises for sale. Call Roman Fitzmartin 215-348-5508

REAL ESTATE INVESTORS wanted. Private Developer in PA Suburbs. Currently 95 Investors. \$15M assets. Also, Soft Pretzel Bakery franchises for sale. Call Roman Fitzmartin 215-348-5508

REAL ESTATE INVESTORS wanted. Private Developer in PA Suburbs. Currently 95 Investors. \$15M assets. Also, Soft Pretzel Bakery franchises for sale. Call Roman Fitzmartin 215-348-5508

REAL ESTATE INVESTORS wanted. Private Developer in PA Suburbs. Currently 95 Investors. \$15M assets. Also, Soft Pretzel Bakery franchises for sale. Call Roman Fitzmartin 215-348-5508

REAL ESTATE INVESTORS wanted. Private Developer in PA Suburbs. Currently 95 Investors. \$15M assets. Also, Soft Pretzel Bakery franchises for sale. Call Roman Fitzmartin 215-348-5508

REAL ESTATE INVESTORS wanted. Private Developer in PA Suburbs. Currently 95 Investors. \$15M assets. Also, Soft Pretzel Bakery franchises for sale. Call Roman Fitzmartin 215-348-5508

REAL ESTATE INVESTORS wanted. Private Developer in PA Suburbs. Currently 95 Investors. \$15M assets. Also, Soft Pretzel Bakery franchises for sale. Call Roman Fitzmartin 215-348-5508

REAL ESTATE INVESTORS wanted. Private Developer in PA Suburbs. Currently 95 Investors. \$15M assets. Also, Soft Pretzel Bakery franchises for sale. Call Roman Fitzmartin 215-348-5508

REAL ESTATE INVESTORS wanted. Private Developer in PA Suburbs. Currently 95 Investors. \$15M assets. Also, Soft Pretzel Bakery franchises for sale. Call Roman Fitzmartin 215-348-5508

REAL ESTATE INVESTORS wanted. Private Developer in PA Suburbs. Currently 95 Investors. \$15M assets. Also, Soft Pretzel Bakery franchises for sale. Call Roman Fitzmartin 215-348-5508

REAL ESTATE INVESTORS wanted. Private Developer in PA Suburbs. Currently 95 Investors. \$15M assets. Also, Soft Pretzel Bakery franchises for sale. Call Roman Fitzmartin 215-348-5508

REAL ESTATE INVESTORS wanted. Private Developer in PA Suburbs. Currently 95 Investors. \$15M assets. Also, Soft Pretzel Bakery franchises for sale. Call Roman Fitzmartin 215-348-5508

REAL ESTATE INVESTORS wanted. Private Developer in PA Suburbs. Currently 95 Investors. \$15M assets. Also, Soft Pretzel Bakery franchises for sale. Call Roman Fitzmartin 215-348-5508

REAL ESTATE INVESTORS wanted. Private Developer in PA Suburbs. Currently 95 Investors. \$15M assets. Also, Soft Pretzel Bakery franchises for sale. Call Roman Fitzmartin 215-348-5508

REAL ESTATE INVESTORS wanted. Private Developer in PA Suburbs. Currently 95 Investors. \$15M assets. Also, Soft Pretzel Bakery franchises for sale. Call Roman Fitzmartin 215-348-5508

REAL ESTATE INVESTORS wanted. Private Developer in PA Suburbs. Currently 95 Investors. \$15M assets. Also, Soft Pretzel Bakery franchises for sale. Call Roman Fitzmartin 215-348-5508

REAL ESTATE INVESTORS wanted. Private Developer in PA Suburbs. Currently 95 Investors. \$15M assets. Also, Soft Pretzel Bakery franchises for sale. Call Roman Fitzmartin 215-348-5508

REAL ESTATE INVESTORS wanted. Private Developer in PA Suburbs. Currently 95 Investors. \$15M assets. Also, Soft Pretzel Bakery franchises for sale. Call Roman Fitzmartin 215-348-5508

REAL ESTATE INVESTORS wanted. Private Developer in PA Suburbs. Currently 95 Investors. \$15M assets. Also, Soft Pretzel Bakery franchises for sale. Call Roman Fitzmartin 215-348-5508

REAL ESTATE INVESTORS wanted. Private Developer in PA Suburbs. Currently 95 Investors. \$15M assets. Also, Soft Pretzel Bakery franchises for sale. Call Roman Fitzmartin 215-348-5508

REAL ESTATE INVESTORS wanted. Private Developer in PA Suburbs. Currently 95 Investors. \$15M assets. Also, Soft Pretzel Bakery franchises for sale. Call Roman Fitzmartin 215-348-5508

REAL ESTATE INVESTORS wanted. Private Developer in PA Suburbs. Currently 95 Investors. \$15M assets. Also, Soft Pretzel Bakery franchises for sale. Call Roman Fitzmartin 215-348-5508

REAL ESTATE INVESTORS wanted. Private Developer in PA Suburbs. Currently 95 Investors. \$15M assets. Also, Soft Pretzel Bakery franchises for sale. Call Roman Fitzmartin 215-348-5508

REAL ESTATE INVESTORS wanted. Private Developer in PA Suburbs. Currently 95 Investors. \$15M assets. Also, Soft Pretzel Bakery franchises for sale. Call Roman Fitzmartin 215-348-5508

REAL ESTATE INVESTORS wanted. Private Developer in PA Suburbs. Currently 95 Investors. \$15M assets. Also, Soft Pretzel Bakery franchises for sale. Call Roman Fitzmartin 215-348-5508

REAL ESTATE INVESTORS wanted. Private Developer in PA Suburbs. Currently 95 Investors. \$15M assets. Also, Soft Pretzel Bakery franchises for sale. Call Roman Fitzmartin 215-348-5508

Financial/Business

Business Opportunities 650

FREE SEMINAR!

Get a Fresh Start with the #1 Franchise!

Hilton Hotel One Hilton Court Parsippany, NJ 07054 SATURDAY MARCH 10, 2007 11:00 am to 1:00 pm

More Opportunities Than Ever Before! • Low Investment • Simple Operation

RSVP 973.720.8500 ext 12 franchise@subway.com

Attendees Will Receive FREE Gift Card Rewards!

Financial/Business

Business Opportunities 655

***\$700-\$800,000 FREE CASH GRANTS! 2007! Never Repay! Personal/Bills, School, Business/Housing, \$49 billion unclaimed 2006! Live Operators! Listings 1-800-592-0366 Ext. 238

Towels & Scrubs Work at home or Stores. Earn up to \$50K to \$500K!! www.apextowelsandscrubs.com

ACCESS LAWSUIT CASH NOW!!! AS seen on TV. Injury Lawsuit Drugging? Need \$500-\$500,000+ within 48 hrs? Low rates. APPLY NOW BY PHONE! 1-888-271-0463 www.cash-for-cases.com

Are you worried about your debt? In charge can help you become debt free, lower your interest rates, payments and stop the collection calls! Call today! 1-877-697-0069

CASH ADVANCE NO CREDIT! NO PROBLEM! #1 IN CUSTOMER SERVICE 888-257-7524 YOURCASHBANK.COM

Financial/Business

Business Opportunities 655

FIND PERSONAL & FINANCIAL FREEDOM Start Today! Customers Tomorrow Seeking Motivated Entrepreneurs BUILD Your CASH FLOW Increase Your Net Worth! PROVEN WEALTH Building System! Learn How! www.mycooBiz.com www.MyCoOpBiz.com

GET OUT OF DEBT!! Avoid Bankruptcy! Do you have \$10,000 or more of credit card debt? Cut your payments in half! FREE CONSULTATION 1-800-699-9740, www.brightcredit.com

NEED A HOME LOAN? Purchase/Refinance. Debt Consolidation. Cash Out. All Credit Considered. Free Prequalification. ACCESS NATIONAL MORTGAGE 1-800-853-8850 Bank Owned/ Good Standing BBB Member - Code 3

NO DOWN PAYMENT? PROBLEM CREDIT? If you're motivated and follow our program, no mortgage program, we'll get you into a NEW HOME. Call 1-866-255-5267 www.AmericanHomePartners.com

Financial/Business

Business Opportunities 655

STOP FORECLOSURE guaranteed. This is not bankruptcy. We do not buy houses. 800-772-4453 ext. 3550. www.house911.com

Professional Services Child Care/Nursery Schools 734 Monday Morning Inc. Reliable, insured care for infants & toddlers. 908-526-4884

Miscellaneous 777 DON'T TRADE - Donate your car, boat, or truck. Tax Deduction. *Free Pick Up* Appraisals *Same Day Pick-Up. 50 C Non Profit 1-877-920-8222 Wheels 4 Charly Foundation

NEED A HOME LOAN? Purchase/Refinance. Debt Consolidation. Cash Out. All Credit Considered. Free Prequalification. ACCESS NATIONAL MORTGAGE 1-800-853-8850 Bank Owned/ Good Standing BBB Member - Code 3

NO DOWN PAYMENT? PROBLEM CREDIT? If you're motivated and follow our program, no mortgage program, we'll get you into a NEW HOME. Call 1-866-255-5267 www.AmericanHomePartners.com

Great Value! 5 Bedrooms! Holland Township Newly remodeled and rebuilt Colonial. This home has lots of room with a huge family room, living room, beautiful eat-in kitchen, large master suite, and 3 full and 1 half baths! Must see to appreciate it all! Nice low maintenance deck, close to golf course, and more! Please contact Gloria at 908-420-6270 for showings or more information. Visit website for more photos at GloriaMcCaulley.com. \$439,900.

RE/MAX REALTY Professionals 856 Rt. 265, Millersburg NJ (908) 874-3388 x21

BIG Classifieds

Certified Credit & Collection Bureau

Located in Branchburg, now seeking: Bill Collector/Customer Service: Phone collecting on past due medical bills. Hourly pay + monthly commission. Receptionist: Multi-line phones/admin. duties. Records Support Staff: Maintain files, photocopy documents/other office duties. We provide a great working environment, competitive salary & full benefits including 401K. Fax Resume w/Salary history to: 908-526-1739 or call: 908-526-9300 x154

EXPERIENCED MORTGAGE REPRESENTATIVE

\$20,000 Signing Bonus Experienced reps make up to 70% Commission & Benefits! Work for a company that really cares about you! Call Tony Nitti: 908-507-1803

Customer Service Rep

Service company seeking CSR for fast-paced environment to assist in handling major accounts. Phone, PC skills a must. Fax resume to: 908-707-9822 or call 800-447-3784 x106

ATTENTION ALL DRIVERS

Joining Our Organization Has Never Been Easier or More Rewarding \$1,000 SIGN-ON BONUS • Complete Hourly Rate • Flexible Part Time Hours • Year Round Work • Incentive Programs • Insurance Discounts BARKER BUS 1400 Rt. 22 East Bridgewater, NJ 08807 732-302-0500

BIG Classifieds

FIELD SUPPORT/CUSTOMER SERVICE

Help us keep dogs safe at home! The Canine Fence Company is seeking self-starters to work directly with customers in their homes training their pets to have Invisible Fence! This growing, energetic company is the industry leader and offers an excellent benefits package including company car. Rotating schedule includes Saturdays. Starting pay is \$11 an hour, with incentives to \$25-\$32K. Training provided. Call: (800)474-0438 x198. THE CANINE FENCE CO. Selected as one of the Top 10 Best Places to Work! EOE

The Bemis Company

was established in 1858 and is the largest flexible packaging co. in North America. You will find our plastic bags in retail and grocery stores throughout the country. The Flemington NJ Plant is currently seeking ambitious and motivated individuals with a manufacturing background to fill several positions for: Entry Level Extruder Helpers Rotating 12 hour shifts Experienced Maintenance Mechanics Rotating 12 hour shifts Interested and qualified candidates should apply weekdays 8AM to 5PM or send resume to: Human Resources Bemis Company 54 Highway 1

<p>Transportation</p> <p>Autos For Sale 1385</p> <p>Dodge Stratus RT Coupe 2005 GOLD, V6, AUTO, LEATHER, M/ROOF, FULLY LOADED, DEALER DEMO, BALANCE OF 7/70 WARRANTY, 13,500 MI, VIN# 5E018130 \$17,300</p> <p>RIEGLER 312 Springfield Ave Summit, NJ 908-273-4800</p> <p>DONATE YOUR CAR... To The Cancer Fund of America... Help Those Suffering With Cancer Today. Free Towing and Tax deductible. 1-800-835-9372 www.cfoa.org</p> <p>FORD EXPLORER 1998 6CYL, AUTO, 93,023 MILES, STOCK# 71012A VIN# WZAB9440 \$6,995</p> <p>FORD WINDSTAR Limited 2001 V6, AUTO, 92,135 MI, STOCK# 61508A, VIN# 1BB92095 \$7,995</p> <p>HONDA CIVIC 2006 2DR, A/C, PW, PL, CRUISE, TILT, DUAL AIRBAGS, KEYLESS ENTRY, 12,724 MI, VIN# 6H531599 \$16,900</p> <p>ISUZU Rodeo 1995 4CYL, AUTO, 173,570 MILES, STOCK# 70932A, VIN# 3CZ82406 \$3,995</p> <p>JEEP WRANGLER 2003 5SPD, SOFT TOP, A/C, 4WD, 64,262 MI, VIN# 3P319061 \$13,495</p>	<p>Transportation</p> <p>Autos For Sale 1385</p> <p>JEEP WRANGLER Sahara 1999 6CYL, AUTO, 57,836 MI, STOCK# 70643A VIN# XP93432 \$11,995</p> <p>MAZDA 3 2004 4CYL, AUTO, 46,712 MILES, STOCK# 61395B, VIN# 1T304612 \$13,995</p> <p>MERCEDES BENZ S420 1997 GOLD, V8, AUTO, LEATHER, M/ROOF, CD CHANGER, FULLY LOADED, 79,900 MI, VIN# VA349160 \$17,215</p> <p>MERCEDES C230 1997 4CYL, AUTO, 154,429 MILES, STOCK# 71080A, VIN# VF531057 \$6,495</p> <p>MERCURY SABLE LS 2005 6CYL, AUTO, 23,658 MILES, STOCK# 70846A, VIN# 5A605400 \$12,995</p> <p>MERCUY WRANGLER 2003 5SPD, SOFT TOP, A/C, 4WD, 64,262 MI, VIN# 3P319061 \$13,495</p>	<p>Transportation</p> <p>Autos For Sale 1385</p> <p>NISSAN ALTIMA GXE 2000 4CYL, AUTO, 97,333 MI, STOCK# 70776A, VIN# YC210619 \$5,995</p> <p>NISSAN MAXIMA GLE 2001 6CYL, AUTO, 81,138 MILES, STOCK# 70640A, VIN# 1T304612 \$9,995</p> <p>NISSAN PATHFINDER SE 1995 6CYL, AUTO, 143,401 MILES, STOCK# 60490B, VIN# SW090692 \$3,995</p> <p>OLDSMOBILE ALERO GL 2003 4CYL, AUTO, 42,997 MILES, STOCK# 70639A, VIN# SC445625 \$8,995</p> <p>PONTIAC GRAND PRIX 2006 PW, PL, A/C, CD, AUTO, 19,444 MI, STK# 81345A, VIN# 61114011 \$11,999</p> <p>PONTIAC GRAND PRIX 2006 AUTO, PW, PL, CD, A/C, 19,366 MI, STK# 81346B, VIN# 61113939 \$11,999</p>	<p>Transportation</p> <p>Autos For Sale 1385</p> <p>PONTIAC GRAND PRIX 2006 PW, PL, A/C, CD, AUTO, 24,680 MI, STK# 81346B, VIN# 6111201 \$11,999</p> <p>SAAB 9.2X LINEAR 2005 5DR, 4 CYL, 5 SPD, INTERIOR PW, PL, A/C, CRUISE, CD, 22,950 MI, VIN# G05141 \$17,495</p> <p>SAAB 9.3 AERO 2004 5SPD, A/C, CD, PW, PL, LEATHER, 46,385 MI, VIN# 41015783 \$21,895</p> <p>SAAB 9.3 LINEAR 2003 5SPD, LEATHER, A/C, CD, PW, PL, 30,115 MI, VIN# 31041014 \$17,895</p> <p>SAAB 9.3 LINEAR 2004 4CYL, TURBO, LEATHER PW SEATS, M/ROOF, A/C, CD, PW, PL, 43,864 MI, VIN# 41054399 \$18,995</p>	<p>Transportation</p> <p>Autos For Sale 1385</p> <p>SAAB 9.3 LINEAR 2004 4CYL, TURBO, LEATHER, A/C, CD, PW, PL, 20,930 MI, VIN# 41022990 \$21,995</p> <p>SAAB 9.3 SE 2000 4CYL, TURBO, LEATHER, A/C, CD, PW, PL, 30,471 MI, VIN# 33040372 \$19,995</p> <p>SAAB 9.3 SE 2000 4CYL, TURBO, LEATHER, A/C, CD, PW, PL, 30,471 MI, VIN# 33040372 \$19,995</p> <p>SAAB 9.3 SE 2000 4CYL, TURBO, LEATHER, A/C, CD, PW, PL, 30,471 MI, VIN# 33040372 \$19,995</p>	<p>Transportation</p> <p>Autos For Sale 1385</p> <p>SAAB 9.3 SE 2003 CONVERTIBLE, AUTO, PW, PL, A/C, CD, LEATHER, 38,341 MI, VIN# 37003800 \$21,995</p> <p>SAAB 9.3 SE 2000 4CYL, TURBO, LEATHER, A/C, CD, PW, PL, 30,471 MI, VIN# 33040372 \$19,995</p> <p>SAAB 9.3 SE 2000 4CYL, TURBO, LEATHER, A/C, CD, PW, PL, 30,471 MI, VIN# 33040372 \$19,995</p> <p>SAAB 9.3 SE 2000 4CYL, TURBO, LEATHER, A/C, CD, PW, PL, 30,471 MI, VIN# 33040372 \$19,995</p>	<p>Transportation</p> <p>Autos For Sale 1385</p> <p>SATURN Station Wagon 1995 AUTO, 122,249 MI, STOCK# 70858B, VIN# S2288795 \$2,995</p> <p>SATURN LEGACY OUTBACK 2005 AUTO, A/C, PW, PL, CD, 26,527 MILES, VIN# 57365081 \$18,990</p> <p>SUZUKI Grand Vitara 2003 XL7, A/T, WHITE, 57,500 MILES, STOCK# 70612A, VIN# 34101338 \$9,995</p> <p>TOYOTA 4RUNNER 2003 SRS, 4WD, AUTO, A/C, PW, PL, CD, 51,179 MILES, VIN# 30005326 \$21,495</p> <p>TOYOTA CAMRY LE 2005 4CYL, AUTO, A/C, PW, PL, CRUISE, TILT, DUAL AIRBAGS, KEYSLESS ENTRY, ALARM, 27,959 MI, VIN# 5U101095 \$19,990</p>	<p>Transportation</p> <p>Autos For Sale 1385</p> <p>TOYOTA Camry Solara 2004 4CYL, 5SPD, A/C, CD, PW, PL, CRUISE, TILT, DUAL AIRBAGS, ALLOYS, KEYSLESS ENTRY, ALARM, 45,981 MILES, VIN# 4U789568 \$16,990</p> <p>TOYOTA COROLLA 2001 4CYL, 5SPD, A/C, CD, CRUISE, TILT, 44,520 MILES, VIN# 4C297493 \$13,990</p> <p>TOYOTA COROLLA CE 2004 4DR, 4CYL, AUTO, A/C, CD, PW, PL, RED, 31.1K MI, STK# 70630A, VIN# 42036844 \$8,995</p> <p>TOYOTA HIGHLANDER LIMITED 2004 6CYL, AUTO, DVD, LOADED, 70,060 MI, STOCK# 70700A, VIN# 40042029 \$18,995</p> <p>TOYOTA MATRIX 2005 4CYL, 4DR, 5SPD, A/C, CD, PW, PL, CRUISE, TILT, DUAL AIRBAGS, 49,544 MILES, VIN# 9C742314 \$14,900</p>	<p>Transportation</p> <p>Autos For Sale 1385</p> <p>TOYOTA MATRIX XR 2003 4CYL, A/T, 45,872 MI, STOCK# 60879B, VIN# 3C024242 \$13,495</p> <p>TOYOTA MR2 Spyder CONVERTIBLE 2000 5SPD, 4CYL, 85,943 MILES, STOCK# 70863A, VIN# Y0012371 \$9,995</p> <p>TOYOTA PRIUS 2002 4CYL, AUTO, 98,762 MILES, STOCK# 71001A, VIN# 20059259 \$9,995</p> <p>TOYOTA PRIUS 2004 4CYL, AUTO, A/C, CD, PW, PL, CRUISE, TILT, DUAL AIRBAGS, 44,520 MILES, VIN# 40063047 \$22,900</p> <p>TOYOTA HIGHLANDER LIMITED 2004 6CYL, AUTO, DVD, LOADED, 70,060 MI, STOCK# 70700A, VIN# 40042029 \$18,995</p> <p>TOYOTA MATRIX 2005 4CYL, 4DR, 5SPD, A/C, CD, PW, PL, CRUISE, TILT, DUAL AIRBAGS, 49,544 MILES, VIN# 9C742314 \$14,900</p>	<p>Transportation</p> <p>Autos For Sale 1385</p> <p>TOYOTA SIENNA 2000 6CYL, AUTO, 98,901 MILES, STOCK# 71123A, VIN# YU301639 \$9,995</p> <p>TOYOTA TACOMA 1998 4CYL, 5SPD, 201,331 MI, STOCK# 70591C, VIN# WZ152133 \$2,995</p> <p>TOYOTA TACOMA 2002 4X4, 4CYL, 5SPD, 93,807 MILES, STOCK# 71080A, VIN# 22027930 \$9,995</p> <p>TOYOTA TACOMA 2003 4CYL, AUTO, 70,331 MILES, STOCK# 71067A, VIN# 32127179 \$9,995</p> <p>VW BEETLE CONVERTIBLE 2003 2DR, 77,410 MILES, VIN# 3M317827 \$13,500</p>
---	---	---	--	--	--	---	---	--	---

BIG Real Estate Classifieds Directory

Great Value! 5 Bedrooms!
Holland Township
Newer remodeled and rebuilt Colonial. This home has lots of room with a huge family room, living room, beautiful eat-in kitchen, large master suite, and 3 full and 1 half baths! Must see to appreciate it all! Nice low maintenance deck, close to golf course, and more! Please contact Gloria at 908-420-6270 for showings or more information. Visit website for more photos at GloriaMcCauley.com. \$439,900.

BRIDGETON TOWNSHIP - Spectacular 4BR Victorian custom built on 3.19 AC. Gourmet kitchen w/center island, formal FR w/Hardwood floors. Sunken FR w/stone fireplace. Master BR offers full bath and w/d closet. 2 car att. garage w/bonus room above ready for finishing! Full Basement, Deck. Close to NJ Bridges. \$529,000

Cheryl Snyder, RE/MAX 440 610-346-7908

CHRISTINE & DANNY CONFALONE
Realtor Associates, Licensed in NJ

OFFICE: (908) 782-0100 Ext. 217
FAX: (908) 782-6375
CELL: (908) 246-9727
E-MAIL: TeamConfalone@weidell.com
WEB: weidell.com/realty

405 ROUTE 202
FLEMINGTON, NJ 08822
Office Serving NJ & PA
Worldwide at Weidell.com

CAROL MEEKINS
REALTOR

OFFICE: (908) 735-5900 Ext. 206
FAX: (908) 730-7265
CELL: (908) 528-2172
E-MAIL: cmeeckins@weidell.com
WEB: www.weidell.com/carol.meekins

109 ROUTE 13
CLINTON, NJ 08809

BIG Child Care Classifieds

Kiddie Academy
Community Begins Here!
Everything you Need, Everything your Child Wants!
Secure, fun, loving environment.
Zodiac - 6:30am
Infants through Full Day Kindergarten
Full & Half Day programs available.
NCTPA A Licensed
Developmentally Appropriate Curriculum
View your child via IP Internet Cam with ParentWatch
Hot Lunch & Snacks Included

Kangaroo Kids
"Your child will be a jump ahead!"
CHILD CARE & LEARNING CENTER
Offering quality year-round programs for infants, toddlers, pre-school, kindergarten and after-school enrichment
908-231-7800
1047 Route 26 North Branch, NJ
Fax 908-231-9847
www.kangarookidscare.com

Kids Music Round
Family Music Program for Children Ages Infant - 4 yrs.
Spring classes begin in April. Call for FREE preview class & brochure.
Fun-filled musical activities.
A special parent/child experience.
908-907-1095
KidsMusicRound.com

Camp Teampoint Ranch
Greatest Camp! Lowest Rates!
On line brochure and video available at www.sbjcc.org/camp.htm
NOW HIRING SUMMER STAFF! Download application at www.sbjcc.org/camp.htm

Shimon and Sara Birnbaum JCC
775 Talamini Road, Bridgewater
For more information contact Paige Birnbaum, Camp Director
908-229-6944 x207
PSibirnbaum@sbjcc.org
www.sbjcc.org

Ask us about our new JCC membership program, "Go for the Gold" Expanded membership options! Great value!

Rainbow Child Development Center
Quality Through Excellence
Serving all Areas
908-722-7837 • 908-685-9401
732-249-5437 • 908-782-3395
908-359-2499

Transportation

Autos For Sale 1385

TOYOTA TACOMA Ext Cab 2002



V6, 5SPD, AIR, PW, PL, CRUISE, TILT, DUAL AIRBAGS, 87,632 MI, VIN# 2Z033654
\$11,900

Muller TOYOTA
866-334-2768
mullertoyota.com

TOYOTA TUNDRA 2004



EXT CAB, V8, AUTO, 4WD, A/C, PW, PL, CD, 24,035 MI, VIN# 4S444307
\$24,950

Muller TOYOTA
866-334-2768
mullertoyota.com

TOYOTA TUNDRA Ext Cab 2000

4X4, V8, AUTO, 167,496 MILES, STOCK# 57005C, VIN# YS044697
\$9,995



172 HWY 202/31 N FLEMINGTON, NJ 908-788-5700
jamestoyotascion.com

VOLVO C70 CONVERTIBLE 2004

4CYL, A/C, CD, PW, PL, 28,167 MI, VIN# 4J045510
SOLD W/ BALANCE OF N/C WARRANTY
\$23,800

Saab Dealer Of The Yr
JMK SAAB
Rt 22 East, Springfield, NJ
800-721-3722

www.jmkssaab.com
23 financing email to qualified buyers on all preowned vehicles for 36 mo. Prices incl all costs to be paid by consumer except lic, reg, taxes. Offers not valid on prior sales. See dealer for details.

VW BEETLE 2001

4CYL, 5SPD, 90,311 MILES, STOCK# 71152A, VIN# 1M451219
\$6,995



172 HWY 202/31 N FLEMINGTON, NJ 908-788-5700
jamestoyotascion.com

VW JETTA VR6 1999

6CYL, 5SPD, 145,529 MILES, STOCK# 60898b, VIN# XM237590
\$4,995



172 HWY 202/31 N FLEMINGTON, NJ 908-788-5700
jamestoyotascion.com

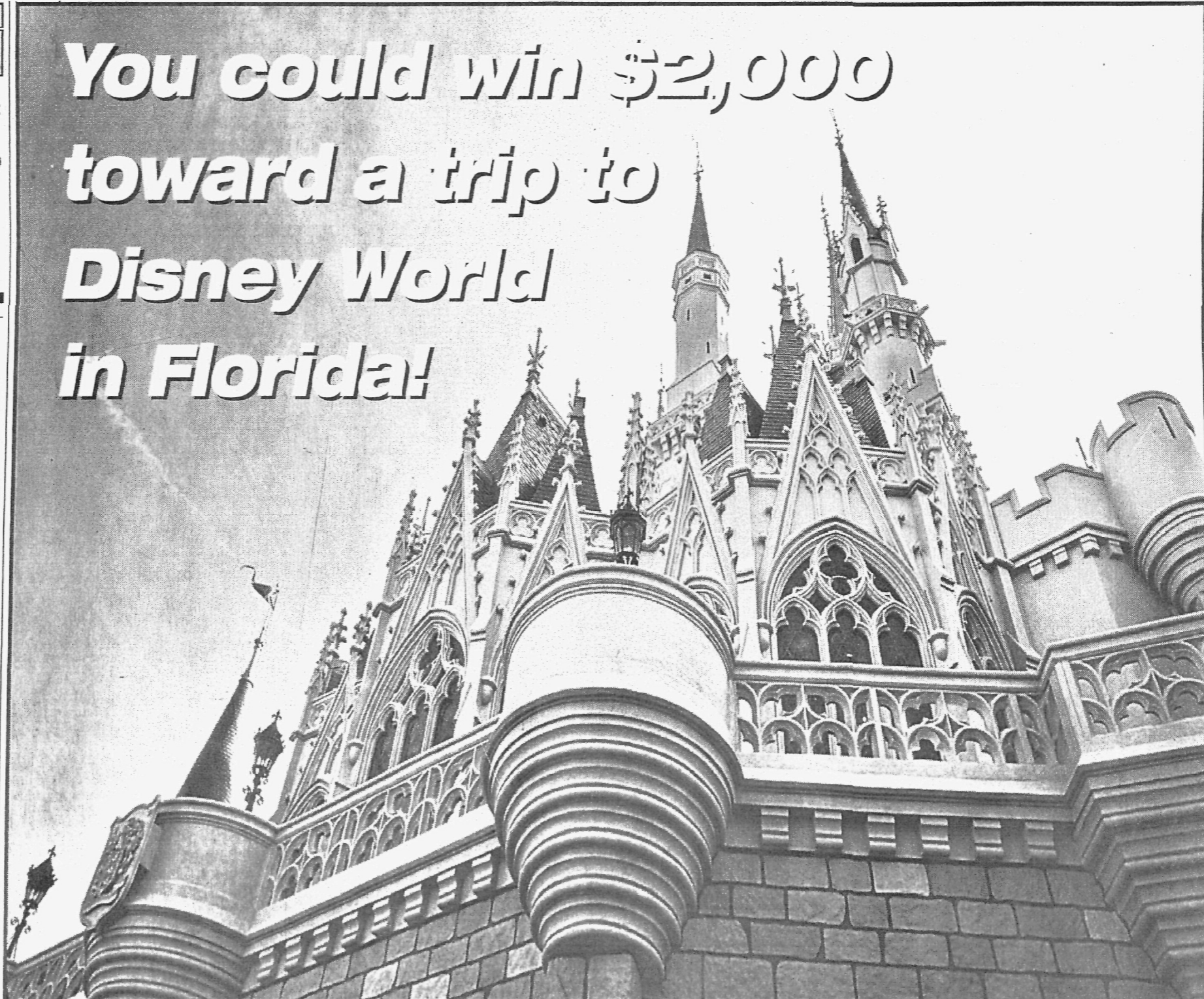
Vehicles Wanted 1415

AUTO'S DON'T TRADE IN! CHARITY DONATIONS: Children's Cancer Big Brothers/Sisters, Boy/Girl Scouts, Homeless, SPCA, YMCA, and more! Or we'll buy any condition/year/make free pickup - Fast service. Call 1-888-395-3955

DONATE YOUR VEHICLE! UNITED BREAST CANCER FOUNDATION. A woman is Diagnosed Every Two Minutes! Free Annual Mammogram. www.ubc.info. Fast, Free Towing, Non Runners Acceptable. 1-888-469-5964

FREE VACATION for Donating you vehicles, boats, property, collectibles. Maximize IRS Deductions helping teens in crisis. D'Var 1-800-338-6724 TD RAH

To place an ad call 1-800-559-9495



You could win \$2,000 toward a trip to Disney World in Florida!

Play the BIG Classified game, **TODAY**, and you could win \$2,000 towards a trip.

Winner will receive \$2,000 for trip and is responsible for all taxes and ground transportation.

Find the ten (10) Crowns in today's Big Classified Section, complete the form and you could be heading to Disney World!

Classification Name & Number	Classification Name & Number
1 _____	6 _____
2 _____	7 _____
3 _____	8 _____
4 _____	9 _____
5 _____	10 _____

Complete this entry form by filling in the correct classification name and number where the ten Crowns are located (for example: Medical Help, 250) and mail to: **Big Classifieds, NJN Publishing, 171 Route 173, Suite 300, Asbury, NJ 08802** or drop off at any of the NJN Publishing locations below, during normal business hours. **Deadline for entries is March 2, 2006 by 5 PM.**

Name _____
Address _____
City _____
State _____ Zip _____
Daytime telephone _____
email _____

 Hunterdon County Democrat 908-782-4740 The Reporter 1-800-559-9495
Suburban News 1-800-472-0102 Independent Press 1-800-472-0119 Warren Reporter 1-800-578-1435

BIG CLASSIFIEDS

No purchase necessary. Entry Blanks may be picked up and deposited at any of the NJN Publishing papers listed above. Entries can be mailed to: NJN Publishing, Classified Dept. 171 State Rt. 173, Suite 300, Asbury, NJ 08802. One lucky winner will win a \$2,000 prize voucher toward a trip. The award is only valid at Cruise Holidays of Flemington. Reservations will be confirmed around 30 days from departure depending upon availability. Air will originate from Philadelphia or Newark, which is the choice of AAA. Winner is responsible for all taxes and ground transportation. Winning entry will be selected by random drawing of completed entries on or about March 3, 2006. All entries become property of NJN Publishing and will not be acknowledged or returned. Open to legal U.S. residents 18 years or older as of date of entry, except employees of NJN Publishing Company and their families. Income and other taxes, if any, are the sole responsibility of the winner. Subject to all federal, state and local laws and regulations. Odds of winning depend on the number of entries received. Acceptance of prize constitutes consent to use winner's name and likeness for editorial, advertising and publicity purposes without further compensation, except where prohibited. Winner may be required to sign an affidavit of eligibility, which must be returned in ten days or an alternate winner will be chosen.